

Network rack size 600 meters



Network rack size 600 meters



The 7U Outdoor Network Cabinet is a high performance solution for protecting critical network equipment in harsh outdoor environments.



Manufacturer of Network Rack - Floor Standing Network Rack 17U 600X600 Mm, Floor Standing Network Rack 22U 600X600 mm, Floor Standing Network Rack 27U 600X600 mm and Floor ...



These 600 mm wide cabinets are available in several heights and depths. They provide flexible ways to mount servers, patch panels, routers, and other sensitive electronic devices reliably and securely.



The 42U enclosure cabinet is packed with features designed to simplify rack equipment installations and rack equipment maintenance: 2 fans on top-panel, bottom vent, perforated doors to promote efficient ...



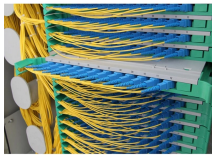
Designed with excellent cable management, easy top and bottom access and a fully adjustable mounting rail system, the wall mount cabinet is extremely versatile for a wide range of applications.



Explore the range of 600mm Wide x 600mm Deep Network Cabinets & Server Racks available at Comms Express - Free Delivery Available To Buy Online Today.



AZE's 32U floor standing network rack cabinet provides secure storage space for storing EIA-310 compliant 19" rack-mount devices such as servers, switches as well as telecommunication equipment.



With this reality in mind, keep reading for a guide to server rack sizes, including why server rack size matters, which sizes are available, and how to choose the right rack size for your workloads.



AZE's 6U IP65 Wall mount Outdoor Cabinet are designed to protect your sensitive network equipment from harsh environments, with waterproof and dustproof features to safeguard it from the elements, ...



AZE's 6U IP65 Wall mount Outdoor Cabinet are designed to protect your sensitive network equipment from harsh environments, with waterproof and dustproof ...



With this reality in mind, keep reading for a guide to server rack ...



Below is a comprehensive, fully detailed guide covering all standard server rack sizes, form factors, height considerations, depth classifications, and best-practice configuration approaches ...

Contact Us

For more information, pricing, or custom network solutions, please contact us:

Website: <https://www.hashherbcafe.co.za>

Email: hello@hashherbcafe.co.za

Phone: +27 63 814 7295

Address: 15 Galaxy Road, Linbro Business Park, Johannesburg, 2065, South Africa

This document is for informational purposes only. Specifications subject to change without notice.

