

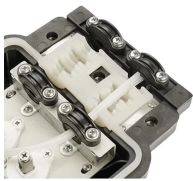
## Network patch panel crimping method



## Network patch panel crimping method



Instead of using prefabricated patch cables, the network is set up using installation cables and a patch panel in the technical room. Each workstation is individually patched, assigned in accordance with ...



Here's the practical, repeatable method we use on real racks: how to punch down a patch panel. Patch panels don't usually get blamed when a link underperforms, but they're part of the ...



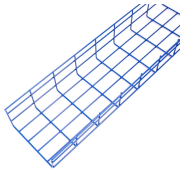
More specifically, I want to talk about how to crimp one of the most common types of network cables that we see today: CAT5 or CAT6 cables using an RJ45 style connector.



Learn the step-by-step network patch panel and keystone jack wiring methods, including essential tools, T568A/B wiring sequences, and tool-free installation tips.



This blog post provides a step-by-step guide on how to dress Ethernet cables into patch panels. The post covers the following topics: preparing the cables, marking the cables, cutting the ...



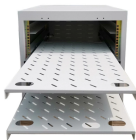
Learn how to wire a patch panel in 10 steps. Covers 110 punch-down technique, T568B color code, cable management, labeling conventions, keystone alternatives, and testing every port with a cable ...



Mastering the punch-down for fixed connections and the RJ45 crimp for patch cords are the two most fundamental skills in a successful structured cabling installation. Both termination ...



This guide explains both standards, shows straight-through vs crossover cables, provides clear color code diagrams, and walks you through ...



This guide explains both standards, shows straight-through vs crossover cables, provides clear color code diagrams, and walks you through crimping RJ45 connectors and punching keystone ...



Learn the step-by-step network patch panel and keystone jack wiring methods, including essential tools, T568A/B wiring sequences, and tool-free installation tips.



This guide explains three copper Ethernet patch panel types—punch down, feed-through, and blank keystone—to help simplify structured cabling choices.



Learn how to make a network cable (patch lead) and fit an RJ45 connector using an RJ45 crimping tool.

## Contact Us

For more information, pricing, or custom network solutions, please contact us:

Website: <https://www.hashherbcafe.co.za>

Email: [hello@hashherbcafe.co.za](mailto:hello@hashherbcafe.co.za)

Phone: +27 63 814 7295

Address: 15 Galaxy Road, Linbro Business Park, Johannesburg, 2065, South Africa

This document is for informational purposes only. Specifications subject to change without notice.

