

Network paralysis after accessing the switch



Overview

□ Power Supply Issues – Switch not powering on or experiencing power fluctuations. A network switch failure can disrupt business operations by causing connectivity issues, packet loss, and downtime for connected devices. This guide will help you troubleshoot and. This document applies to Catalyst switches that run on Cisco IOS® System Software. If your network is live, ensure. Network switches, as the core of data forwarding in enterprise LANs, are key nodes that ensure interconnection between endpoints and stable transmission of business data. Their failures may originate from physical layer connection anomalies or may be caused by logical configuration and hardware. If you're unable to access email, browse the web, or stream music, it's likely you're not connected to your network and can't access the Internet. They manage data traffic between devices connected within a Local Area Network (LAN).

Network paralysis after accessing the switch



Learn how to spot, troubleshoot, and fix common network switch issues, from slow connections to VLAN errors, and keep your network running smoothly.



Sometimes, when I come in in the morning and connect devices, I lose all network connectivity on all devices connected to the office switch. I can't even ping anything on the network. ...



By following the steps outlined in this guide—starting with checking the gateway and switches, verifying power, examining cables, rebooting devices, and reviewing network ...



A comprehensive switch troubleshooting from the physical layer to the data link layer to the network layer to find out why your network switch is not working.



Prerequisites
 Troubleshoot The Physical Layer
 Troubleshoot The Most Common Port and Interface Commands For Cisco iOS
 Understand The Specific Port and Interface Counter Output For Cisco iOS
 Common System Error Messages
 Common Port and Interface Problems
 Related Information
 This table shows the most common commands used to troubleshoot the port or interface problems on switches that run Cisco IOS System Software on the Supervisor.
 Note: The right hand column on the next table gives a brief description of what the command does and lists any exceptions to the use per platform. If you have the output of the supported com...
 See more on cisco
 Published: Nov 3, 2023
 Missing: Network paralysis
 Must include: Network paralysis
 Isolink



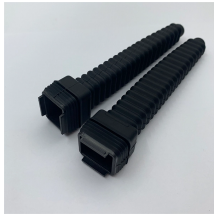
Learn how to fix the 4 most common network switch failures port issues, power faults, VLAN errors & compatibility problems. Step-by-step troubleshooting guide.



This guide provides a systematic framework for network switch troubleshooting: begin with the physical layer, then move to logical configuration, and finally use CLI tools and traffic analysis for deep ...



Whether using a managed or unmanaged switch, diagnosing and fixing switch failures requires a structured approach. This guide will help you troubleshoot and resolve network switch failures, ...



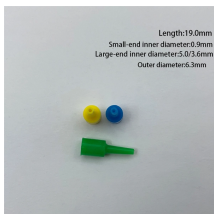
Learn how to identify common network switch issues and apply practical solutions to restore connectivity and maintain stable network performance in your IT environment.



If you're unable to access email, browse the web, or stream music, it's likely you're not connected to your network and can't access the Internet. Fortunately, most connectivity issues can be resolved ...



The resolution is that ordinarily the system recovers automatically. No action is required. If the switch overwhelms the Ethernet interface, check the speed and duplex setup. Also, use a sniffer ...



Learn how to identify common network switch issues and apply practical solutions to restore connectivity and maintain stable network ...

Contact Us

For more information, pricing, or custom network solutions, please contact us:

Website: <https://www.hashherbcafe.co.za>

Email: hello@hashherbcafe.co.za

Phone: +27 63 814 7295

Address: 15 Galaxy Road, Linbro Business Park, Johannesburg, 2065, South Africa

This document is for informational purposes only. Specifications subject to change without notice.

