

## Network Rack Door Installation Sequence Table



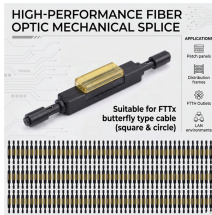
## Network Rack Door Installation Sequence Table



This installation guide provides instructions for trained service technicians installing a rack enclosure. Information includes assembling the rack, coupling two racks, and routing cables through the rack. ...



This manual contains important instructions that you should follow during installation and maintenance of the RE Series Enclosure. Please read all instructions before operating the equipment and save this ...



This installation guide is organized into the following chapters and appendixes: Chapter 1, "Preparing for Installation," describes safety considerations, required tools and equipment, an overview of the ...



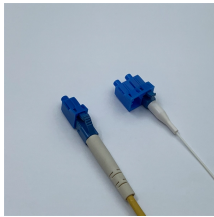
Before attempting to install a server into a rack, fully extend the anti-tip legs or bolt the cabinet to the floor. At least two persons (or a suitable lift) are needed to install 2U and larger servers into a rack.



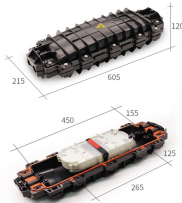
View and Download NavePoint 6U instructions online. Deluxe IT Wallmount Cabinet Enclosure 19-Inch Server Network Rack With Locking Glass Door Pro Series. 6U enclosure pdf manual download. Also ...



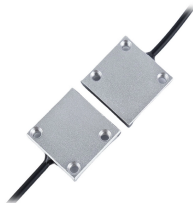
Before installing an Eaton Dual Swing End of Row Door, it is recommended that you familiarize yourself with the various door components described within this document.



The following illustration shows the items that you need to install the server in a rack cabinet. If any items are missing or damaged, contact your place of purchase.



This document contains general installation instructions for the IBM 42U Enterprise Rack and IBM 42U Enterprise Expansion Rack cabinets. Always read the documentation that comes with your server or ...



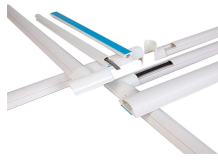
Step 1: Snap the top cover and bottom plate(7) into the door frame(4). Use M5\*12 Self-tapping screw (H1) to connect top cover(3), door frame(4) and bottom plate(7).



It describes the sturdy construction and customizable options for the racks. Key features include heavy load capacity, an IP20 rating, adjustable mounting angles, lockable doors and panels, included fans ...



The following steps outline the sequence for installing rack-mountable components in a rack. Hewlett Packard Enterprise strongly recommends installing a stabilizer foot before any other component.



Before rack mounting the chassis, ensure that the cabinet or rack meets the following requirements: The specifications listed in the “Cabinet and Rack Requirements” section on page A-1.

## Contact Us

For more information, pricing, or custom network solutions, please contact us:

Website: <https://www.hashherbcafe.co.za>

Email: [hello@hashherbcafe.co.za](mailto:hello@hashherbcafe.co.za)

Phone: +27 63 814 7295

Address: 15 Galaxy Road, Linbro Business Park, Johannesburg, 2065, South Africa

This document is for informational purposes only. Specifications subject to change without notice.

