

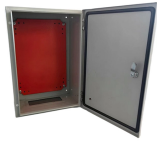
Nepal OPGW Fittings G 654 E



Nepal OPGW Fittings G 654 E



OPGW is mainly applied in communication line of newly constructed high voltage transmit electricity system with 35 KV or above, or replacement of existing ground wire of previous overhead high ...



OPGW Cable — Supply Series Opgw Fibre Cable Cable Accessories, Vibration Damper, Tension Clamp, Dead-end, Joint Box. Production And Sales All Kinds ...



Some key requirements include: - The fiber optic cable must use dual-window single mode G.652D optical fibers with specified attenuation coefficients and dispersion characteristics. - The OPGW ...



2. What is G.654.E? G.654.E fiber is a fiber featuring low attenuation and large core area, and is best suited for terrestrial long-haul and high-capacity transmission links.



OPGW (Optical Ground Wire) cable is used in overhead transmission lines, combining grounding and fiber optic communication in a single cable. This model supports reliable power line protection and ...



To ensure that the OPGW cables will operate successfully in a high-voltage network, all aspects associated with the implementation of the technology must be correctly analysed.



Free Nationwide Delivery Enjoy fast and free delivery across Nepal on all orders above Rs. 5,000. No hidden charges.



OFDLC FIBERLIGN® Downlead Cushion For Concrete or Steel Poles It accommodate one or two OPGW or other cables as necessary. The base of the clamp is o die-cast aluminium, whereas the ...



They are typically installed in pairs and can be modified to accommodate a wide range of OPGW cables. Both a downlead clamp (FDOA-XXYY; sold separately) and a furcation kit (AXOFC01; sold ...



One of the key advantages is gradual migration. With both G.652.D and G.654.E fibres combined, operators can transition to higher-capacity architectures without fully overhauling existing ...

Contact Us

For more information, pricing, or custom network solutions, please contact us:

Website: <https://www.hashherbcafe.co.za>

Email: hello@hashherbcafe.co.za

Phone: +27 63 814 7295

Address: 15 Galaxy Road, Linbro Business Park, Johannesburg, 2065, South Africa

This document is for informational purposes only. Specifications subject to change without notice.

