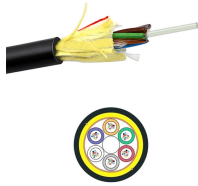


Namibia OPGW Fittings 12 Cores



Namibia OPGW Fittings 12 Cores



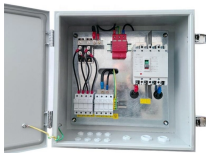
OFDIC FIBerIIGn® Downlead Cushion For Concrete or Steel Poles modate one or two OPGW or other cables as necessary. The base of the clamp is of die-ca aluminium, whereas the top is a polymeric ...



It serves dual purposes by functioning as both an optical fiber cable and a grounding wire, protecting against lightning and carrying short circuit currents. The OPGW consists of an optical unit housed ...



This fitting is designed to pass two opgw cables through a common tension point, which helps to simplify the installation process and reduce the number of fittings needed.



As the leading world manufacturer of fiber optic cable, Unifibercable is uniquely positioned to provide a full line of all-dielectric self-supporting (ADSS) aerial cables and Optical Ground Wire (OPGW) as ...



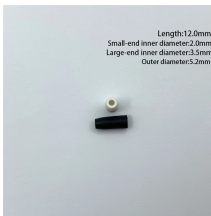
Combining electrical functionality with communication capabilities, 12 core OPGW serves a dual purpose; it protects the electrical infrastructure while facilitating high-speed data transfer.



It is best suited to applications where the ground wire will be replaced by an identical cable due to tower limitations. Because of this, OPGW contains exposed elements made of both stainless steel and ...



UnitekFiber's 12 cores OPGW Fiber Optic Ground Wire is engineered for 35kV, 110kV, 220kV, 500kV, 750kV or more overhead high voltage transmission systems, combining reliable ...



AFL CentraCore Optical Ground Wire (OPGW) is preferred for its compact size and ability to house up to 96 fibers in a diameter starting at only 12mm.



The Central Tube Optical Ground Wire (OPGW) is surrounded by single or double layers of aluminum clad steel wires (ACS) or mix ACS wires and aluminum alloy wires, 12 Core OPGW Cable design is ...



Discover our selection of OPGW Accessories. Our product experts are here to assist you. Get in touch with our team now.

Contact Us

For more information, pricing, or custom network solutions, please contact us:

Website: <https://www.hashherbcafe.co.za>

Email: hello@hashherbcafe.co.za

Phone: +27 63 814 7295

Address: 15 Galaxy Road, Linbro Business Park, Johannesburg, 2065, South Africa

This document is for informational purposes only. Specifications subject to change without notice.

