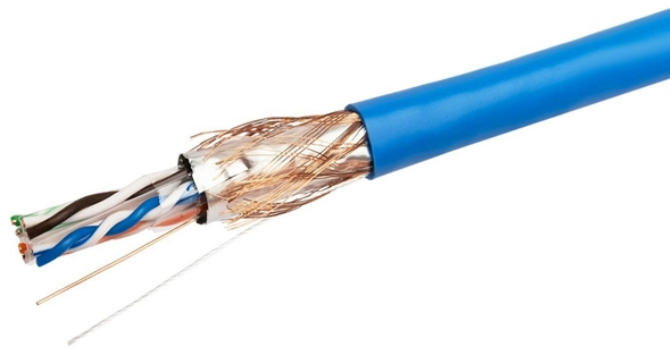


# **NEMA4X Corrugated Conduit for Base Station Communication**



## NEMA4X Corrugated Conduit for Base Station Communication



Discover NEMA 4X electrical enclosures, designed for extreme protection against corrosion and harsh weather, ideal for demanding industrial settings.



Get free shipping on qualified NEMA 4X Electrical Boxes, Conduit & Fittings products or Buy Online Pick Up in Store today in the Electrical Department.



NEMA 4X Enclosure and Cabinet Manufacturer. Indoor and outdoor enclosures for Telecommunication, Aerospace, Green Energy, Oil Gas and Utilities markets.



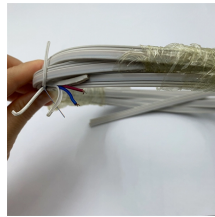
Choose from our selection of NEMA 4X enclosures, including over 6,800 products in a wide range of styles and sizes. Same and Next Day Delivery.



This conduit has an outer cover that resists moisture to protect wire and cable from corrosion and water infiltration. It's liquid-tight when installed with liquid-tight conduit fittings and routes wire and cable in ...



RiteAV (1-1/4") Direct Burial Corrugated Conduit for Outdoor Ethernet and Or Fiber Optic Cables with Pull String (1-1/4") In stock nsra39053 Size 25 Foot (8 Meter) 50 Foot (15 Meter) 75 Foot (23 Meter) ...



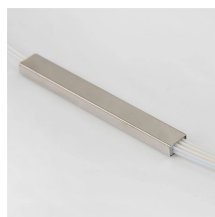
Corrugated conduit should not be installed using directional drilling equipment due to limited tensile strength and the fact that the corrugations will create significant friction during the pullback that will ...



Dura-Line manufactures standard High Density Polyethylene (HDPE) conduits for standard installation applications such as standard underground, as innerducts in existing conduits, or corrugated ...



Material: • PVC P& C Flex non-metallic corrugated conduit helps make power and communication installations faster and easier by providing maximum installation flexibility.



4 Inch P and C Flex Gray Non-Metallic Corrugated Flexible Conduit On Edge Brace Reel, Length - 250 Feet

## Contact Us

For more information, pricing, or custom network solutions, please contact us:

Website: <https://www.hashherbcafe.co.za>

Email: [hello@hashherbcafe.co.za](mailto:hello@hashherbcafe.co.za)

Phone: +27 63 814 7295

Address: 15 Galaxy Road, Linbro Business Park, Johannesburg, 2065, South Africa

This document is for informational purposes only. Specifications subject to change without notice.

