

Multimode fiber optic cable cannot be inserted



Overview

Swap the fiber or DAC cable with one confirmed working. For multimode links, check fiber polarity mapping—incorrect polarity between patch panels can break the link entirely. Ensure both ports are enabled and set to 10 Gbps full-duplex; disable negotiation if needed. We've listed the five most common ones. First of all, let's briefly recap what SFP and SFP+ stand for. SFPs - short for 'small form-factor pluggable' - are compact, hot-pluggable devices that link networking devices, like switches, routers and. The issue is when I plug multimode fibre in the module the link doesn't come up. Any reasons why it is happening. Why multimode fibre is not working with Multimode SFP Module?

Someone suggested because MM. Multi-mode fiber disperses light in multiple paths. But expect power loss, CRC errors, and unstable. Fiber optic networks are celebrated for their speed and reliability, but even the best systems can encounter problems. Check for common connection problems, such as link failures or modules not recognized. Choosing LINK-PP SFP Transceivers often reduces.

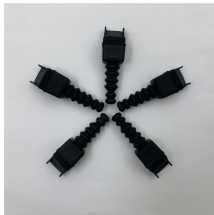
Multimode fiber optic cable cannot be inserted



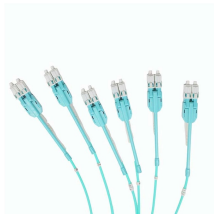
You can quickly resolve SFP+ Module connectivity issues by following a systematic optical transceivers troubleshooting process. Check for common connection problems, such as link ...



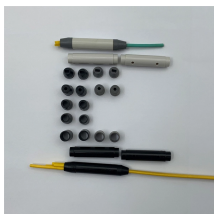
This article will guide you through the process of troubleshooting fiber optic connections, with a focus on ensuring proper TX and RX alignment and how to correctly switch patch cables to ...



The SFP/Media Converter is designed for easy use in optical fiber transmission. When the connection does not work as expected after we set it up according to the Installation Guide, we ...



How to troubleshoot a fiber optic transceiver? This article will focus on how to troubleshoot and resolve transmission, information reading, and hardware failures of the optical module.



Learn how single-mode and multi-mode transceivers differ, compatibility rules, testing tips, and best practices for reliable fiber deployments.



Align the module with the device's SFP port, ensuring TX/RX labels match the cable's direction. Gently push the module until it clicks into place (a latch will secure it).



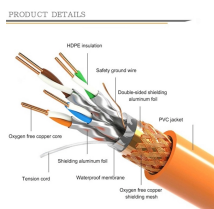
This article is intended to provide a basic understanding and layer 1 troubleshooting steps in the event the case links do not come ON-LINE while using small form-factor pluggable (SFP) modules.



When we connect multimode SFP with Single mode fiber fraction of low-intensity optical signal will get in but will fade after very short distance. So, it is possible to connect multimode SFP ...



Learn how to troubleshoot fiber networks. Identify common issues like high loss, dirty connectors, and signal drops, with practical solutions for optical links.



There are several possible reasons for failure. We've listed the five most common ones. First of all, let's briefly recap what SFP and SFP+ stand for. SFPs - short for "small form-factor pluggable" - are ...

Contact Us

For more information, pricing, or custom network solutions, please contact us:

Website: <https://www.hashherbcafe.co.za>

Email: hello@hashherbcafe.co.za

Phone: +27 63 814 7295

Address: 15 Galaxy Road, Linbro Business Park, Johannesburg, 2065, South Africa

This document is for informational purposes only. Specifications subject to change without notice.

