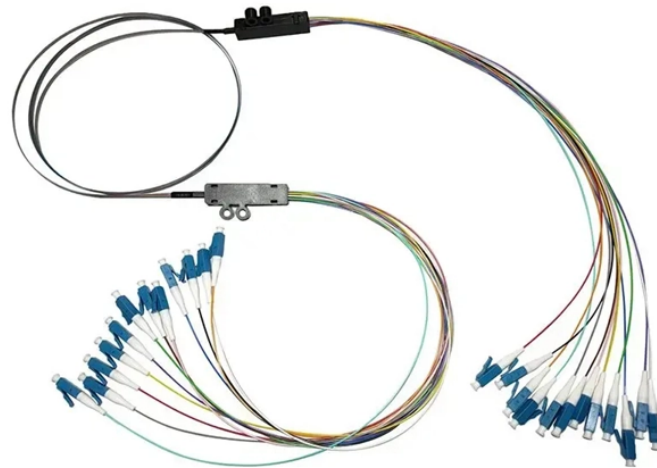


Multi-core optical module



Multi-core optical module



The use of multicore optical fibers is emerging as a key solution to implement space-division multiplexing, essential for overcoming the capacity limits of conventional single-mode fibers....



Multicore fiber (MCF) refers to an optical fiber that contains multiple cores or light guiding cores within a single strand of optical fiber. It's designed to offer higher bandwidth capacity compared to traditional ...



Learn how 4-core fan-in/fan-out device for multi-core fiber systems to standard optical networks. Explore technical specs, use cases, and top products.



Corning ® Multicore Fiber (MCF) is engineered for the next generation of AI-driven data centers, delivering up to 4x the optical pathway density within the familiar 125-micron fiber footprint.



Fan-in/Fan-out FIFO device is the key component connecting multi-core optical fiber and single-core optical fiber. Based on this MCF FIFO development platform, HYC will soon launch MCF ...



Development of STL Multiverse, multi-core optical fibre targets to resolve data traffic problem due to high-capacity transmission. Data transmission capacity is directly proportional to the ...



Multi-Mode-Multi-Core Fiber (MM-MCF) significantly increases the number of spatial channels to 114 or more, and transmission of 10 Pbit/s was achieved utilizing this multi-mode MCF.



Our self-contained Fiber-Coupled Multi-Color Laser Modules are fully integrated with internal electronics. Their ARM-based firmware simplifies external software control and remote monitoring. They deliver ...



Boost speeds with an effortless optical module transceiver. Find the best fiber optic module and SFP optical module here.



Understanding the working principle of optical modules—especially SFP transceivers—is critical for network engineers, data center operators, and telecom professionals tasked with building and ...

Contact Us

For more information, pricing, or custom network solutions, please contact us:

Website: <https://www.hashherbcafe.co.za>

Email: hello@hashherbcafe.co.za

Phone: +27 63 814 7295

Address: 15 Galaxy Road, Linbro Business Park, Johannesburg, 2065, South Africa

This document is for informational purposes only. Specifications subject to change without notice.

