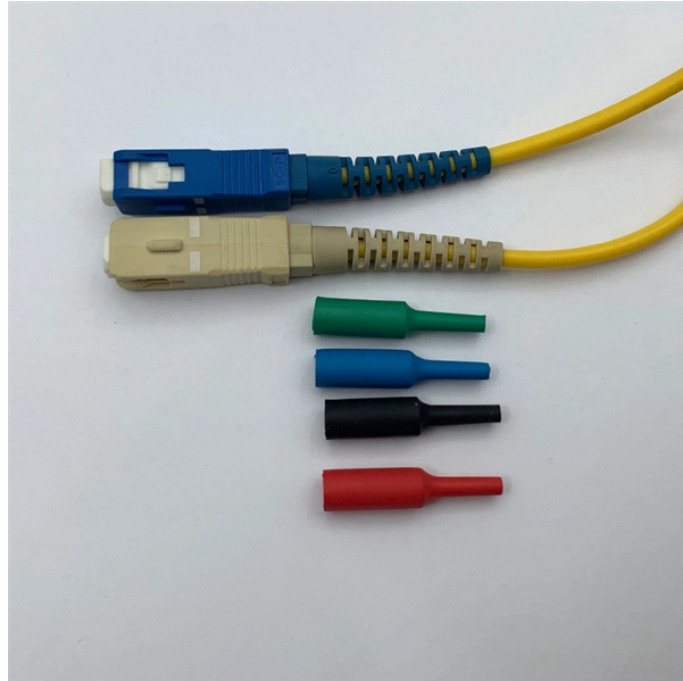


## Monaco Tunable Optical Module 2 5G



## Monaco Tunable Optical Module 2 5G



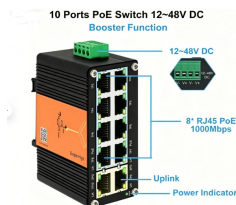
Optcore 2.5G SFP transceivers are an industry-standard small form-factor pluggable module for SONET OC-48, SDH STM-16 (2488 Mbps) applications. These SFP modules comply with the SFP MSA, CE, ...



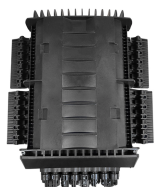
Explore the benefits of tunable optical transceivers for flexible, scalable, and cost-effective optical communication networks.



ETURBEV 2.5G Gigabit Optical Module Multi-Mode Dual Fiber SFP-2500M-850nm 300m Dual LC Port (2.5G 1310m 10km)



GIGALIGHT's 2.5G SFP series optical transceiver modules are widely used in synchronous optical networking (SONET OC-48 / SDH STM-16) and are compatible with Gigabit Ethernet and 1G/2G ...



I am looking at a main switch (Aruba 1930 series or Mikrotik CRS320 series) that has SFP+ connectivity but I'm looking to connect that to a 2.5Gbe switch through SFP+ or copper.



Shop SFP Module for all switches, including 155M, 1G, 2.5G, 3G& 4G speed, 100m to 160km. Compatible with 80 OEMs like Cisco, Juniper & HPE, Saving 80%, Fast shipping & 5-year warranty.



FS 2.5G SFP solution with low power consumption provides an ideal connection option for 2.5G Ethernet over Cat5e cable, switch to switch interface, and AP/Router interface.



This optical receiver module is a high-performance APD receiver for 2.5Gbps optical transmission systems. Inside its compact package, it integrates an APD/TIA optical detector unit, limiting amplifier ...



2.5G SFP transceiver, 2.5G single mode SFP fiber optical module, 1310nm DFB laser and PIN photo detector, 10Km~20Km transmission with SMF



Youopto 25G Series is a 25Gbps transmitter optical subassembly integrating a high speed DFB laser, a micro-TEC, thermistor, a monitor photodiode in a 10PIN XMD BOX package.

## Contact Us

For more information, pricing, or custom network solutions, please contact us:

Website: <https://www.hashherbcafe.co.za>

Email: [hello@hashherbcafe.co.za](mailto:hello@hashherbcafe.co.za)

Phone: +27 63 814 7295

Address: 15 Galaxy Road, Linbro Business Park, Johannesburg, 2065, South Africa

This document is for informational purposes only. Specifications subject to change without notice.

