

Modification of Distribution Box Process



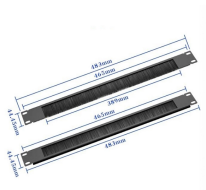
Modification of Distribution Box Process



The fabrication process includes cutting, bending, welding, spraying and other processes to ensure that the box body has a firm structure, a flat appearance, accurate dimensions, and good protection ...



By choosing a knowledgeable Custom Distribution Boxes Manufacturer and providing precise project details, your custom box project can proceed smoothly — delivering a perfect fit for ...



Learn key methods to enhance distribution box installation quality, including location, height, wiring, and safety compliance.



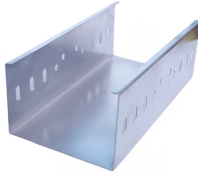
Insert the test probe through the insulated opening in the top of A post of pair 1 binding posts on the distribution box. (A posts are the left side row of posts of each of the two rows, and B posts are the ...



Discover how E-Abel customizes electrical distribution boxes to meet unique requirements for industrial, commercial, and residential applications. Learn about our design, ...



What's the difference between a distribution box and a sub-panel? A distribution box typically refers to the main electrical panel that receives power from the utility service. A sub-panel is ...



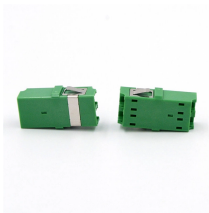
First of all, you need to have a simple understanding of the definition of a distribution box, and make it clear which kind of distribution box you want to install.



The full assembly process from that time is in the video below. The star of this build was the "Quick Bar" modular busbar system. Compared to traditional busbars, which require cutting and ...



In summary, optimizing electrical distribution box design through custom services is essential for meeting specific project needs and enhancing overall performance.



Learn the step-by-step process of customizing complete distribution boxes tailored to your needs. From requirement confirmation to design, production, and testing, find out how to get a ...

Contact Us

For more information, pricing, or custom network solutions, please contact us:

Website: <https://www.hashherbcafe.co.za>

Email: hello@hashherbcafe.co.za

Phone: +27 63 814 7295

Address: 15 Galaxy Road, Linbro Business Park, Johannesburg, 2065, South Africa

This document is for informational purposes only. Specifications subject to change without notice.

