

Minimum Specification Dimensions of Trapezoidal Cable Trays



Minimum Specification Dimensions of Trapezoidal Cable Trays



Show fabrication and installation details of cable tray, including plans, elevations, and sections of components and attachments to other construction elements.



Cable Tray Technical Guide A practical guide to product selection and installation This guide for engineers and installers has been developed by ABB as a practical reference regarding cable tray ...



The drawings which constitute a part of these specifications indicate the general route of the cable tray systems. Data presented on these drawings is as accurate as preliminary surveys and planning can ...



Explore standard sizes by tray type, understand width and depth limits, and see how to calculate and choose compliant cable tray sizes for real projects.



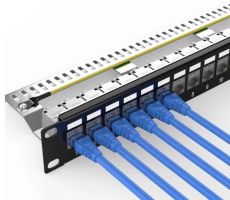
Some applications may require the cable tray to support the weight of a single, dead object in addition to the cable loads. Specifications typically require this to be applied at the midpoint of the span between ...



The drawings, which constitute a part of these specifications, indicate the general route of the cable tray systems. Data presented on these drawings is as only accurate as preliminary surveys and planning ...



Learn about cable tray width dimensions and specifications as per NEC standards. Understand types, sizes, materials, and installation guidelines for safe and efficient wiring systems. Cable tray systems ...



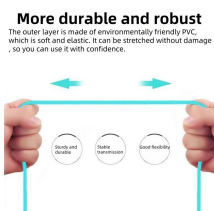
NEMA VE 1-2017 Specifies requirements for metal cable trays and associated fittings designed for use in accordance with the rules of Canadian Electrical Code, Part I and the National Electrical Code®



Cable trays of less than 12 feet (ft.) in length should be supported in a minimum of one location, and trays over 12 ft. in length should be supported at a minimum of two locations.



Explore standard sizes by tray type, understand width and depth limits, and see how to calculate and choose compliant cable tray sizes for real projects.



Many electrical systems employ cable trays. They route cables safely & efficiently. NEC defines minimum cable tray size & electrical installation specifications. These guidelines protect ...



This document outlines clearance requirements for cable trays. It provides a table with clearance dimensions labeled a through k for typical and special clearance ...

Contact Us

For more information, pricing, or custom network solutions, please contact us:

Website: <https://www.hashherbcafe.co.za>

Email: hello@hashherbcafe.co.za

Phone: +27 63 814 7295

Address: 15 Galaxy Road, Linbro Business Park, Johannesburg, 2065, South Africa

This document is for informational purposes only. Specifications subject to change without notice.

