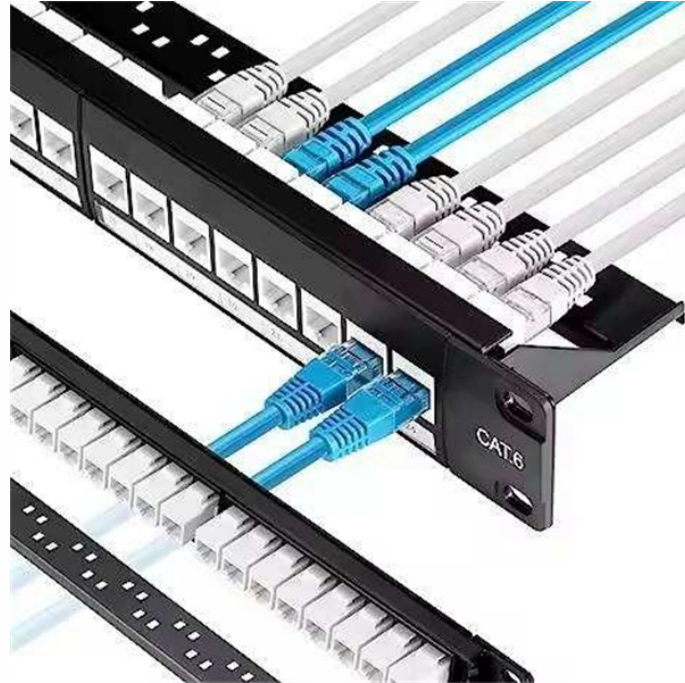


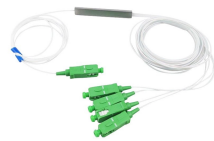
Micro-module single row 18



Micro-module single row 18



Mini-Fit® Mini-Fit® Dual Row 6 Circuits Single Row
Dual Dual Row Row 12.0A Max. 66 Circuits Circuits
1-15 Circuits 12.0A 12.0A Max. Max. (Select Sizes
Available)



The document describes three intelligent micro-module data center solutions: Fit Atom single cabinet, Fit Array single-row, and Fit Atrix double-row. Fit Atom is a single cabinet solution for small spaces.



Product Highlights: The 600 Single-Row Micro-Module Data Center can meet the application scenarios of 1-to-8 cabinets. It has flexible composition and simple assembly between cabinets to form a ...



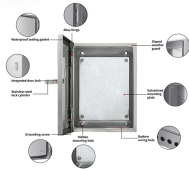
This Resi MAX product is a mini enclosure for modular device. It is surface mounted. It is composed of 1 row of 18 modules of 18m. The In rated current is 63A.



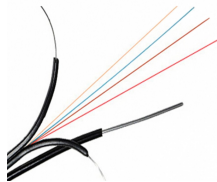
Connect the programmer to the module using the proper cable (refer to the ONEPROGRAMMER_AP instruction manual). After installing all modules and other loop devices, apply power to the loop in ...



All in one 20F Container MDC fully integrated with standard rack, wall mount cooling, AC/DC power, battery, power distribution, security, monitoring and fire systems.



Discover Smart Micro Modular Data Center Solutions with One Row One DC, delivering integrated power and cooling, flexible scalability, and reliable performance.



View the RMXE118F product features, specifications, documents and FAQs. Clipsal Resi MAX Consumer switchboard 1 row 18 modules Flush Mounted.



The CIPOSTM Micro IPM is a family of compact, three-phase, intelligent power modules (IPM) for low-power motor drive applications including fans, pumps, air purifiers and refrigerator compressor drives.



s1sst-05-28-gf-18.00-13 - The S1SST is a single row discrete wire assembly using a 1.00 mm pitch. Available in custom cable lengths, the S1SST uses Teflon™ fluoropolymer wire and is designed to ...

Contact Us

For more information, pricing, or custom network solutions, please contact us:

Website: <https://www.hashherbcafe.co.za>

Email: hello@hashherbcafe.co.za

Phone: +27 63 814 7295

Address: 15 Galaxy Road, Linbro Business Park, Johannesburg, 2065, South Africa

This document is for informational purposes only. Specifications subject to change without notice.

