

Mauritius Explosion-proof Maintenance Distribution Box



Overview

This explosion-proof distribution box is built for reliable protection in demanding industrial settings. It supports stable distribution and helps reduce risks linked to exposed electrical components. Sparks or overloads can damage equipment and put people at risk. Downtime can also disrupt daily operations. Our control safety cabinet, socket, maintenance lighting, power supply switch, operation box. Atexdelvalle offers world-class explosion-protected solutions guaranteeing highest quality and performance with no compromise. Manufacture custom made Local Control Stations & Distribution Boxes, local control panel boards and stations, explosion protected control units, distribution. Dust Explosion-proof Power Distribution Panel MAMX-20 *In—built circuit breaker, AC Contactor, Thermorelay, PLC, Transducer, Soft starter and other components, The panel can install indicator, Pushbutton, Universal switch, Display instrument. Designed for use in hazardous environments, our explosion-proof distribution boxes ensure optimal performance while safeguarding your electrical systems from. An explosion-proof distribution box is a rugged enclosure for hazardous areas, safely delivering power while preventing sparks or heat from igniting flammable

surroundings.

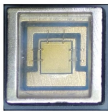
Mauritius Explosion-proof Maintenance Distribution Box



Explosion-proof electrical distribution boxes are essential for safety in hazardous environments. These specialized enclosures are built to contain internal explosions and stop the ignition of flammable ...



Dust explosion-proof power distribution panel, adopting different instruments and program control modules to control the temperature of the heating object so as to meet the requirements of different ...



Atex control stations, explosion protected control units and distribution boxes made stainless steel maritime grade AISI 316L or AISI 304L. Atex Delvalle provides a custom build facility for Hazardous ...



BARTEC offers one of the most extensive ranges of explosion-proof and substance-resistant components, devices, and systems for controlling, switching, and connecting for hazardous areas ...



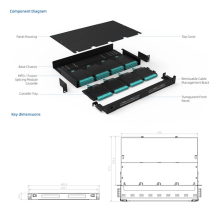
Find durable distribution boxes and enclosures for circuit breakers at Electrical.mu. Ideal for safe and organized electrical setups in Mauritius.



Take control of your electrical safety today with this complete set of customized distribution boxes. Choose an explosion-proof distribution box for reliable power distribution, easier maintenance, and ...



The explosion-proof distribution box safely delivers power in hazardous zones (oil, gas, chemical plants) with rugged, spark-resistant casing—ATEX/IECEX, IP66 certified for reliable operation in explosive ...



Distribution Boxes BXM (D)51 Series Explosion proof Distribution Boxes Lighting/Power (Ex d e IIB) Distribution Boxes BXM (D)53 Explosion proof Distribution Boxes Lighting/Power (Ex d e IIC) ...



Flameproof and explosion proof, these power overhaul distribution boxes are suitable for use in hazardous areas. Main switch: Maximum current is 180A. Branch circuit: Maximum current is 100A. ...



Designed for use in hazardous environments, our explosion-proof distribution boxes ensure optimal performance while safeguarding your electrical systems from potential explosions and environmental ...

Contact Us

For more information, pricing, or custom network solutions, please contact us:

Website: <https://www.hashherbcafe.co.za>

Email: hello@hashherbcafe.co.za

Phone: +27 63 814 7295

Address: 15 Galaxy Road, Linbro Business Park, Johannesburg, 2065, South Africa

This document is for informational purposes only. Specifications subject to change without notice.

