

## Materials for Engineering Cable Trays



## Materials for Engineering Cable Trays



Ladder cable trays consist of two longitudinal side members connected by individual transverse members and provide solid side rail protection and system strength with smooth radius fittings and a ...



Aluminium, steel, or plastic? Compare key features of electrical cable tray materials to find perfect match for your building's requirements.



Learn how to choose the best cable tray system for your needs. Explore types, materials, installation tips, and NEC compliance in this expert guide.



Discover over 100 expert answers about cable trays, covering key topics like material selection, load capacity, installation methods, and maintenance.



The material properties of an alloy depend on the distribution of each type of element present, giving each alloy specific weight, strength, toughness, hardness, corrosion and fatigue attributes. We offer ...



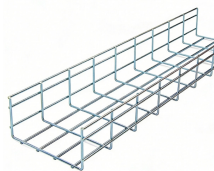
Master cable tray systems with our expert guide covering structural engineering, material selection, and NEC compliance to ensure safe, efficient, and scalable industrial cable management.



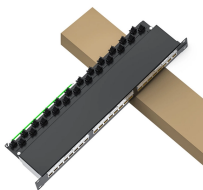
Cable Tray Technical Guide A practical guide to product selection and installation This guide for engineers and installers has been developed by ABB as a practical reference regarding cable tray ...



The choice of construction material depends heavily on the installation environment, with common options including galvanized steel, aluminum, and fiberglass. Galvanized steel is the ...



Our wind certification report provides you with list of acceptable B-Line series cable tray supports, fittings and covers based off of the environmental conditions, cable loading, and type of cable tray in your ...



Learn how to choose the best cable tray system for your needs. Explore types, materials, installation tips, and NEC compliance in this expert guide.



Explore all types of cable trays—ladder, perforated, basket, solid, and channel. Learn their uses, materials, pros, cons, and key differences.



It offers cable tray systems fabricated from corrosion-resistant steel, stainless steel and aluminium alloys along with corrosion-resistant finishes, including zinc, PVC and epoxy.

## Contact Us

For more information, pricing, or custom network solutions, please contact us:

Website: <https://www.hashherbcafe.co.za>

Email: [hello@hashherbcafe.co.za](mailto:hello@hashherbcafe.co.za)

Phone: +27 63 814 7295

Address: 15 Galaxy Road, Linbro Business Park, Johannesburg, 2065, South Africa

This document is for informational purposes only. Specifications subject to change without notice.

