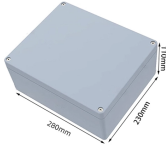


Matching the distribution box



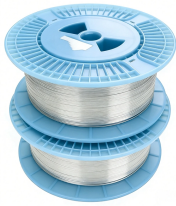
Matching the distribution box



When working with data from different sources or distributions, we often need to transform one distribution to match another. In this post, we'll explore various methods for distribution ...



Box 16 on your 1099-R shows the state taxable portion of your retirement distribution — here's how to use it, and what to do when it's blank.



If a rollover contribution is made to a traditional or Roth IRA that is later revoked or closed, and distribution is made to the taxpayer, enter in boxes 1 and 2a of Form 1099-R the gross distribution ...



If your 1099-R's box 1 (gross distribution) and 2a (taxable amount) do not match, when you attempt to save the form, you will receive a message indicating the taxable amount in box 2a is less than the ...



For a distribution from a Roth IRA, report the total distribution in box 1 and leave box 2a blank except in the case of an IRA revocation or account closure and a recharacterization, earlier.



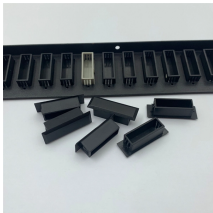
When choosing a distribution box, make sure the cord is long enough to reach the main power line. If it's too short, you may not be able to connect the distribution box. Most residential and ...



Box 1 - The total gross amount you received this year from annuity benefits, refund or direct rollovers before any tax is withheld. Box 2a - The amount from Box 1 that is taxable. For a direct tax deferred ...



Understand your distribution box labels to identify circuits, improve safety, and troubleshoot electrical issues in your home with confidence.



For Form 1040, you'll report the Gross Distribution (Box 1) on line 4a if it's an IRA distribution or line 5a if it's a pension/annuity. Then you'll report the Taxable Amount (Box 2a) on line ...



If Box 14 shows State Tax withheld, you can enter the amount from Box 2a. If no state tax was withheld, you can delete the State ID number, so that Boxes 14, 15, and 16 are blank.

Contact Us

For more information, pricing, or custom network solutions, please contact us:

Website: <https://www.hashherbcafe.co.za>

Email: hello@hashherbcafe.co.za

Phone: +27 63 814 7295

Address: 15 Galaxy Road, Linbro Business Park, Johannesburg, 2065, South Africa

This document is for informational purposes only. Specifications subject to change without notice.

