

## Mali CFP2400G



### Overview

The Mali and Immortalis series of graphics processing units (GPUs) and multimedia processors are semiconductor intellectual property cores produced by Arm Holdings for licensing in various ASIC designs by Arm partners. Mali GPUs were developed by Falanx Microsystems A/S, which was a spin-off of a research project from the Norwegian University of Science and Technology. Arm Holdin. Graphics processors In 2005, Falanx announced their Utgard GPU Architecture, the Mali-200 GPU. Arm followed up with the Mali. Mali Video is the name given to ' dedicated and. There are multiple versions implementing a number of, such as,, and. As with all. On April 25, 2017 the Mali-C71 was announced, ARM's first image signal processor (ISP). On January 3, 2019 the Mali-C52 and C32 were announced, aimed at everyday devices incl. On January 21, 2012, reported that Luc Verhaegen was driving a reverse-engineering attempt aimed at the Mali series of GPUs, specifically the Mali 200 and Mali 400 versions. The project was known as L. • - GPU developed by Qualcomm (formerly AMD, then Freescale)• - with Intel graphics core, not licensed to third parties• - with AMD graphics core, not licensed to.

## Mali CFP2400G



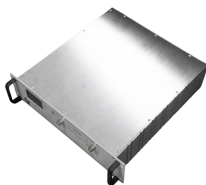
Two open source drivers based on reverse engineering efforts exist for the Mali GPUs. Lima covers the Utgard family (Mali-400/450) used on most Allwinner SoCs that have Mali GPUs.



ARM produce designs for a GPU called "Mali". This is incorporated in many SoCs and thus devices. It is used in a number of devices that can run Debian. There are four major revisions of Mali GPUs: ...



The Mali series of graphics processing units (GPUs) and multimedia processors are semiconductor intellectual property cores produced by Arm Holdings for licensing in various ASIC ...



Gelled electrolyte technology; AGM separator; Recognized by UL & CE; ABS container. Note: The above characteristics data can be obtained within three charge/discharge cycles.



Mali (processor) ... The Mali and Immortalis series of graphics processing units (GPUs) and multimedia processors are semiconductor intellectual property cores produced by Arm Holdings for licensing in ...



Explore the fourth-generation Mali GPU architecture, providing insights into its design, performance, and applications for developers.



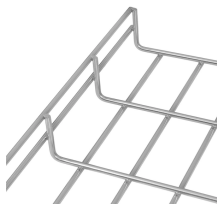
Android performance triage with Streamline Tutorial. The Mali family of mobile GPUs has evolved over time, as we've added new features and increased capabilities. Each new generation behaves slightly ...



CFP2400G(2V400Ah) Dimensions The Relationship for Open Circuit Voltage and Residual Capacity (25°C)



Here is the list of cards for the group of graphics cards ARM Mali with the basic technical details. As well as a link to their respective global characteristics.



The texture pipeline is only used for reading image data types. In the execution engines in Mali Bifrost GPUs, scalar instructions are executed in parallel so the GPU operates on multiple data elements ...

## Contact Us

For more information, pricing, or custom network solutions, please contact us:

Website: <https://www.hashherbcafe.co.za>

Email: [hello@hashherbcafe.co.za](mailto:hello@hashherbcafe.co.za)

Phone: +27 63 814 7295

Address: 15 Galaxy Road, Linbro Business Park, Johannesburg, 2065, South Africa

This document is for informational purposes only. Specifications subject to change without notice.

