

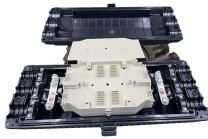
Making a Router Fiber Optic Interface



Making a Router Fiber Optic Interface



The easiest way to do is, terminate your ISP connection to single router with at least 2 independent LAN interfaces, then you can build 2 separate networks there.



Today I'm going to explain what you need to run fiber optic networking around your home and property on a budget, for high bandwidth and low latency networking.



Learn the essential hardware bridge and sequential steps needed to link the optical line to your router.



Rather than telling you how to design a FTTH network, we will illustrate some of the different network architectures, construction methods, etc. possible, then offer options that may work for your network ...



Most network hardware like switches or routers are available with optional fiber optic interfaces, but PCs generally only come with UTP copper interfaces that require media converters.



For a fiber optic connection, you need an optical network terminal (ONT), a router, and appropriate Ethernet connections for wired devices. Your service provider typically supplies the ONT, ...



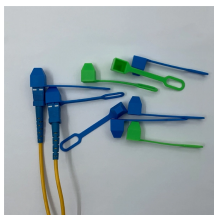
Hardware SFP28 routers are expensive and very loud. Since this is going into a home I decided to custom build a router using a simple PC running Proxmox and Opnsense.



Build a home fiber network for 1-2 Gbps speeds with this complete guide to installation, troubleshooting, and performance.



Build a home fiber network for 1-2 Gbps speeds with this complete guide to installation, troubleshooting, and performance.



However, setting up a fiber optic connection to your router can seem daunting if you're unfamiliar with the process. In this guide, we'll walk you through how to connect a fiber optic...



In this discussion, we will explore the technical aspects of building a home fiber optic network, including different setups like a 1G Bidi network or a 10G gaming shed setup, as well as the ...

Contact Us

For more information, pricing, or custom network solutions, please contact us:

Website: <https://www.hashherbcafe.co.za>

Email: hello@hashherbcafe.co.za

Phone: +27 63 814 7295

Address: 15 Galaxy Road, Linbro Business Park, Johannesburg, 2065, South Africa

This document is for informational purposes only. Specifications subject to change without notice.

