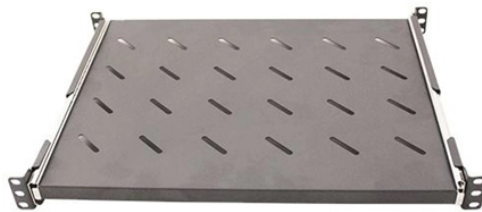


Location of the home s electrical distribution box



Overview

Bottom Line Up Front: Your home's distribution box (electrical panel) is typically located in the basement, garage, utility room, or mounted outside near your electrical meter. To find it quickly, look for a rectangular gray metal box about the size of a medicine cabinet, often positioned close to. According to a survey, 40% of renters aren't sure where their electrical box is located. This essential component plays a pivotal role in distributing electricity throughout your home. Dive into our detailed guide below to discover its whereabouts and understand its intricacies. So, you've stumbled. Electrical systems power our homes, offices, and industrial facilities, but behind every reliable electrical setup lies a crucial component that often goes unnoticed: the distribution box. Understanding how it works helps ensure safety, efficiency, and future readiness. Some of breakers installed may have unique safety characteristics such as.

Location of the home s electrical distribution box



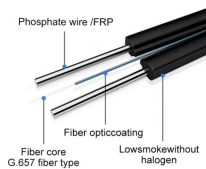
It's important to be aware of where your electrical panel is located. If it is located in your unit, knowing what the directory identifies your circuit breakers is helpful to identify what devices and equipment ...



According to a survey, 40% of renters aren't sure where their electrical box is located. This essential component plays a pivotal role in distributing electricity throughout your home. Dive into our ...



An electrical panel box—often called a breaker box or distribution board—is the main point where electricity from the utility company enters your ...



Understanding electrical panel components is essential for home safety and maintenance. In this article, you'll learn about the main parts of an electrical panel, how they function, ...



Understand distribution boxes (DB boxes) in 5 minutes. Learn about types, components, functions, and uses. Find the perfect DB box for your needs.



An electrical panel box—often called a breaker box or distribution board—is the main point where electricity from the utility company enters your home. It contains circuit breakers or fuses that ...



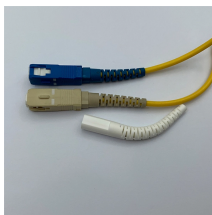
A, commonly known as an electrical panel or breaker box, serves as the central control hub for your home's electrical system. The main service panel ...



Electricity enters the box from the main power line. Inside the box, the power is split into multiple circuits —each one leading to a different area, like your kitchen, workshop, or machine line. ...



An electrical panel box, also known as a breaker box or electrical distribution panel, is the central hub for electrical power in a building. It is typically located in a basement, garage, utility room, or other ...



What's the difference between a distribution box and a sub-panel? A distribution box typically refers to the main electrical panel that receives power from the utility service. A sub-panel is ...



Distribution boxes vary in size and shape based on the complexity of the electrical system and the building's power needs. They can be installed in different places such as electrical ...

Contact Us

For more information, pricing, or custom network solutions, please contact us:

Website: <https://www.hashherbcafe.co.za>

Email: hello@hashherbcafe.co.za

Phone: +27 63 814 7295

Address: 15 Galaxy Road, Linbro Business Park, Johannesburg, 2065, South Africa

This document is for informational purposes only. Specifications subject to change without notice.

