

Lithuanian Aluminum Alloy Cable Tray



Lithuanian Aluminum Alloy Cable Tray



Designed with simplicity and durability in mind, it offers outstanding corrosion resistance, long service life, and easy installation with virtually no maintenance required. Thanks to its excellent material ...



This article explores the design, benefits, installation practices, and real-world applications of aluminum alloy cable trays, providing actionable insights for your next project.



Aluminum alloy cable tray is a comprehensive wiring system that integrates structural mechanics, material science and aesthetic performance.



Shop Aluminum Cable Tray and other Rooftops products. Straight Aluminum Ladder Tray, 45° Horizontal Bends and more.



These longer-length cable tray sections are ideal for industrial and commercial applications such as roadway crossings and pipe bridges or lowering installation costs by reducing the number of ...



Aluminum alloy cable trays have high corrosion resistance. They are suitable for power plant, chemical plant, petrochemical and other fields, especially suitable for the high corrosion environment.



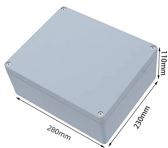
Made from aluminum alloy, these rugged components bolt together to form a solid and reliable cable pathway. To secure and protect your infrastructure cables, RXL offers high quality aluminum cable ...



The aluminum cable tray is a lightweight, durable, and cost-effective solution used for organizing and safely carrying electrical and data cables. With easy installation and strong corrosion resistance, it is ...



Aluminum Cable Tray systems are lighter than steel cable tray and Certified CSA Cable Tray, UL listed, NEMA and certified. Because of their lighter weight aluminum cable trays are easier to install than ...



Aluminum alloy cable tray is a comprehensive wiring system that integrates structural mechanics, material science and aesthetic performance.



As a less-expensive alternative to conduit, a stronger alternative than wire basket, and superior to generic tray, Snap Track saves on labor and reduces total installed costs.

Contact Us

For more information, pricing, or custom network solutions, please contact us:

Website: <https://www.hashherbcafe.co.za>

Email: hello@hashherbcafe.co.za

Phone: +27 63 814 7295

Address: 15 Galaxy Road, Linbro Business Park, Johannesburg, 2065, South Africa

This document is for informational purposes only. Specifications subject to change without notice.

