

Lighting distribution box set 478

Pre-Terminated Patch Panel



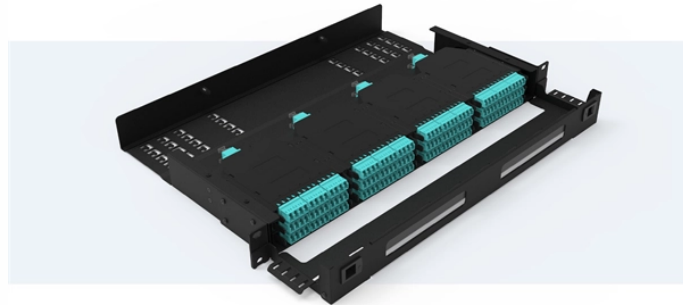
Standard 19" width



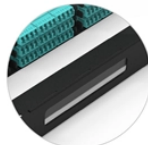
Max 144 fibers in 1U



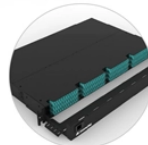
MPO/Fusion Dual-Purpose



Removable Cable Management Tray



Transparent Front Cover



High-Quality Matte Coated Steel



Lighting distribution box set 478



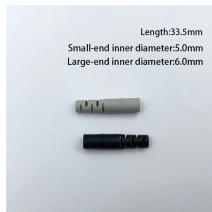
Whether you're organizing circuits in large commercial installations, routing power for outdoor and landscape lighting, or controlling multiple zones within a facility, these boxes provide safe, efficient, ...



Designed for use in overhead supply areas and outdoor settings, these products provide secure, reliable power distribution for residential, commercial, and public infrastructure applications.



32 amp Distribution Board includes cover, frame, base box, guide rail, neutral copper bar and earth copper bar. It has surface mounting type and flush mounting type.



Lighting Distribution Box We manufacture high-quality lighting distribution boxes for residential and commercial applications. Our boxes feature a modular design with 4-24 positions, supporting 220V ...



A distribution board (also known as panelboard, breaker panel, or electric panel) is a component of an electricity supply system that divides an electrical power feed into subsidiary circuits, while providing ...



Explore lighting distribution panels engineered to efficiently distribute and protect lighting circuits. Ideal for industrial, commercial, and large-scale electrical systems with reliable safety and ...



The Accu-Panels Lighting Distribution Panel can be used to support temporary and emergency power needs for pandemic response, mass casualty disasters and other urgent needs, including medical ...



In this case, we recommend BEGA distribution boxes for installation in soil. After connecting the electrical lines to the terminals, the distribution box must be filled with the sealing compound ...



Designed to fit through standard door ways and in tight spaces, the WeldingRack is a transformer and power distribution box all in one making it the right choice for factory, construction, and ship ...

Contact Us

For more information, pricing, or custom network solutions, please contact us:

Website: <https://www.hashherbcafe.co.za>

Email: hello@hashherbcafe.co.za

Phone: +27 63 814 7295

Address: 15 Galaxy Road, Linbro Business Park, Johannesburg, 2065, South Africa

This document is for informational purposes only. Specifications subject to change without notice.

