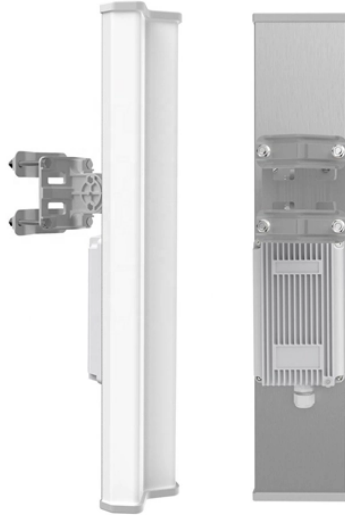


## Lighting Distribution Box Box Body



## Lighting Distribution Box Box Body



Buy low priced Lighting Distribution Box from Lighting Distribution Box factory, We provide good quality Lighting Distribution Box from China.



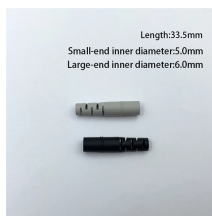
DOHO is a leading lighting distribution board and other safety equipment for industrial, commercial, and residential applications. We are an experienced manufacturer with a proven track record in the ...



Choose from our selection of power distribution boxes in a wide range of styles and sizes. Same and Next Day Delivery.



Plastic Electrical Box, also known as a consumer control unit or electricity control unit. It is a device that is a type of distribution board that helps in protecting cables from overload and then damage or ...



Keep up to 4 chains of MaxLite LED light bars secure and well-connected with the MaxLite MLSDLB-DBOX distribution box. This compact junction box allows for hardwired connections even in damp ...



Explore Gladiator Lighting's collection of power distribution boxes, engineered to provide reliable, centralized power distribution and protection for lighting systems and electrical installations.



8, 11, 12, 14, 16, 18 Way CNC Steel Body Distribution Box features a durable, surface-mount design for secure electrical distribution



Lex Products offers a full range of portable power distribution units including boxes, boards and panels, specifically engineered for indoor and outdoor use.



Explore Hubbell Wiring Device-Kellems' spider boxes, built to provide reliable and versatile temporary power solutions in demanding environments like construction sites and outdoor events. These ...



It features a 400A 3-phase input/output via camlock, along with a rugged shock-mounted rack case for touring use. Designed for both 110V and 220V distribution, this box is perfect for professional lighting ...



Plastic Electrical Box, also known as a consumer control unit or electricity control ...

## Contact Us

For more information, pricing, or custom network solutions, please contact us:

Website: <https://www.hashherbcafe.co.za>

Email: [hello@hashherbcafe.co.za](mailto:hello@hashherbcafe.co.za)

Phone: +27 63 814 7295

Address: 15 Galaxy Road, Linbro Business Park, Johannesburg, 2065, South Africa

This document is for informational purposes only. Specifications subject to change without notice.

