

Lebanon Flame-Retardant Cable Tray Specifications



Lebanon Flame-Retardant Cable Tray Specifications



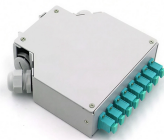
It includes: - An introduction and overview of SFSP, a leading steel products factory in Lebanon established in 2011. - Descriptions of the cable trays, fittings, accessories, and support systems ...



We manufacture a wide range of products capable of providing the characteristics which respond to the proposed application, along with quality of assembly, speed of installation, and cost-saving cable trays.



Armorduct Systems" Cable Tray has achieved a E90 Fire Rating after carrying out testing in accordance with DIN 4102-12 at FIRES notified Technical Assessment Body (TAB), which is managed in ...



The correct choice must balance fire endurance with long-term durability and operational practicality. This article highlights the region-specific drivers you should include in specifications and ...



Cable tray installed in a hazardous location must contain only those cables that are appropriate for this type of environment as defined in Chapter 5 of the NEC.



When fitting cable trays and their accessories, the products are cut on site to create changes of direction, adjust sections, etc. Damage can also occur during handling; as a result, both the ...



More than 40 years ago, Cablofil invented the wire cable tray concept and introduced it to the European market. Cablofil's success is the result of continuous innovation and the ability of the wire cable tray ...



Cable Tray Gebze IV Istanbul Makine ve Sanayicileri Organize Bolgesi, 6.Cadde, No:2
41455 Demirciler Koyu, Dilovasi - Kocaeli - Turkiye
Tel: +90 (262) 999 05 55 Fax: +90 (262) 502 05 70



These standards define the test conditions to verify that the system, made up of fire resistant trays, supports, accessories and cables, maintains the power supply for a certain time even in extreme fire ...

Contact Us

For more information, pricing, or custom network solutions, please contact us:

Website: <https://www.hashherbcafe.co.za>

Email: hello@hashherbcafe.co.za

Phone: +27 63 814 7295

Address: 15 Galaxy Road, Linbro Business Park, Johannesburg, 2065, South Africa

This document is for informational purposes only. Specifications subject to change without notice.

