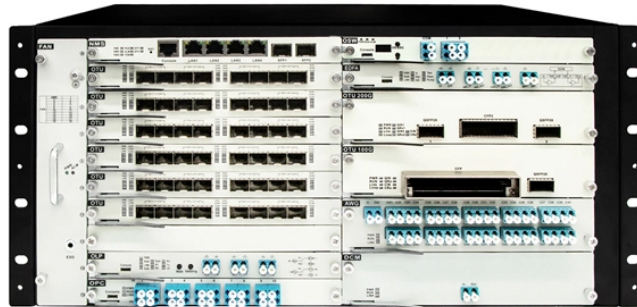


# Leakage Prevention Principle of Distribution Box



## Overview

Some steel electrical enclosure box models are equipped with digital displays that can intuitively show the operating status of each circuit. The grounding system connects to the enclosure via grounding copper busbars, conducting leakage current to the earth to prevent . Leakage protector, commonly known as leakage switch, is used to protect people from electrical shock and electrical fire when the circuit or electrical insulation is damaged due to short circuit to ground. It is generally installed on the outlet circuit of the distribution box of each household and. Safety control requirements for distribution box: 1. It is a general term for leakage. Leakage protector, referred to as leakage switch, also known as leakage circuit breaker, is mainly used in the equipment leakage failure and fatal danger of personal shock protection, with overload and short circuit protection function, can be used to protect the line or motor overload and short. Earth Leakage Protection (Additional Safety) Many modern distribution boxes include a life-saving device called an Earth Leakage Circuit Breaker (ELCB) or Residual Current Device (RCD). The Small Power Distribution Board, distribution panel, etc.

## Leakage Prevention Principle of Distribution Box



Here, it is mainly described according to its protection function and use classification. Generally, it can be divided into three kinds: leakage protection relay, leakage protection switch and ...



In a house, the main distribution board is usually where the main electrical cable enters, however there may be smaller boards with contact breakers and possibly earth leakage units at other ...



Leakage protection device, also known as leakage protector, refers to a device that can automatically disconnect the circuit or send out an alarm signal when the leakage current in the...



Some steel electrical enclosure box models are equipped with digital displays that can intuitively show the operating status of each circuit. The grounding system connects to the enclosure via grounding ...



The working principle of the leakage protector of the Small Power Distribution Board consists of an iron core made of permalloy and a secondary coil wound on the annular iron core.



A distribution box (distribution board/DB box) distributes incoming power to multiple circuits and typically houses protective devices such as breakers and optional leakage/surge protection.



The power switch installed in the distribution box and switch box shall have the functions of short circuit protection and overload protection, and its rated value and action setting value shall ...



The leakage protection device in the low-voltage distribution system is one of the effective measures to prevent personal electric shock accidents, and it is also a technical measure to prevent electric fire ...



The utility model relates to the technical field of power equipment, in particular to an electric leakage protection device of an outdoor comprehensive distribution box.



Many modern distribution boxes include a life-saving device called an Earth Leakage Circuit Breaker (ELCB) or Residual Current Device (RCD). It detects tiny imbalances in current that ...

## Contact Us

For more information, pricing, or custom network solutions, please contact us:

Website: <https://www.hashherbcafe.co.za>

Email: [hello@hashherbcafe.co.za](mailto:hello@hashherbcafe.co.za)

Phone: +27 63 814 7295

Address: 15 Galaxy Road, Linbro Business Park, Johannesburg, 2065, South Africa

This document is for informational purposes only. Specifications subject to change without notice.

