

Lc interface not working



Overview

There are many reasons for communication failure, some of the more common issues are: Modules are not powered on. Wall power outlets are not working. Incorrect IP addresses in either the PC or LC card or. The hardware installation went relatively trouble free - I'm using the original Fanatec hall sensors and load cell, using the Leo Bodnar LC-USB interface and the 3-4 wire load cell converter. Resolution When a user launches the Chromatography Data System (CDS) and it connects to the LC system, all icons will appear green once turned on (Figure 1). Is there something else that I can be missing?

Since it worked fine in LogWorks, I must assume the issue lies with the HPTuners. A tiny speck of dust, a faulty connector, a worn adapter, and the whole thing starts acting strangely.

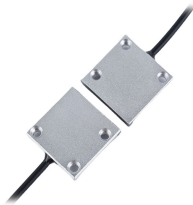
Lc interface not working



If you jumpered 12V battery to 12V remote and it's still not turning on, and ground is solid, the LC2i is faulty.



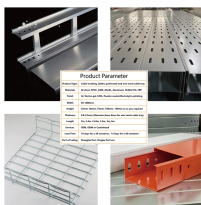
I've used the LC-USB configuration V2 software and DiView to calibrate the pedals as per instructions. Windows "USB game controllers" interface also tells me that the pedals are calibrated correctly.



That is why this guide walks through the messy parts of LC panel problems and how you fix them before your network feels like it is dragging its feet. The goal is to keep everything simple ...



For Waters Driver Pack-controlled components, this process tends to work in place of powering everything off, clearing the DHCP (sometimes no access), rebooting the Node, and then powering-on ...



Configuration tool for Sayo devices.



There are many reasons for communication failure, some of the more common issues are: Modules are not powered on. Wall power outlets are not working. Communication cards in the ...



Looking for some help identifying some issues with my circuit. It is for a robot arm and is meant to interface with all my stepper motors/drivers and a raspberry pi 4. It is my first time attempting to ...



Not only can you source LC-based transceivers from different vendors, but you can also replace an MT-RJ transceiver or other transceiver meeting MSA mechanical dimensions with an LC transceiver.



Our interface gets grounded via the obd2 port so nothing needs to be run from our interface to anything.



Many times people ask questions about how to fix their LCDs that don't display or displays wrong/random stuff. The following information, when supplied with your thread, will get your ...

Contact Us

For more information, pricing, or custom network solutions, please contact us:

Website: <https://www.hashherbcafe.co.za>

Email: hello@hashherbcafe.co.za

Phone: +27 63 814 7295

Address: 15 Galaxy Road, Linbro Business Park, Johannesburg, 2065, South Africa

This document is for informational purposes only. Specifications subject to change without notice.

