

Latest National Standard for Cable Tray Installation



Overview

NEMA BI 50016-2024 (VE2) : Cable Tray Installation Guidelines Owner: Granata, Casey Product Areas: Metal Wire Mesh/Basket Cable Trays Divisions: BI - Building Infrastructure ESG Category: Conduits Description: Addresses shipping, handling, storing and installing cable tray. NEMA BI 50016-2024 (VE2) : Cable Tray Installation Guidelines Owner: Granata, Casey Product Areas: Metal Wire Mesh/Basket Cable Trays Divisions: BI - Building Infrastructure ESG Category: Conduits Description: Addresses shipping, handling, storing and installing cable tray. NEMA BI-50016 (formerly VE 2) addresses shipping, handling, storing, and installing cable tray systems, and provides information on maintenance and system modification. Please first log in with a verified email before subscribing to alerts. Documents sold on the ANSI Webstore are in electronic. This process brings together volunteers and/or seeks out the views of persons who have an interest in the topic covered by this publication. Covers construction and test requirements for. These systems provide an efficient and adaptable solution for managing a wide range of cables, including power cables, control cables, Ethernet, and fiber optic lines. Information on maintenance and system modification is also

provided. These systems, made from metal or plastic, are open structures designed to support electrical conductors, ensuring proper organization and safety. Here's what you need to know: Cable Types: Only use.

Latest National Standard for Cable Tray Installation



Master NEC Article 392 with our comprehensive guide. Learn essential cable tray requirements for installation, grounding, and fill capacity to ensure full electrical compliance.



NEC Article 392 governs cable tray systems. Only approved tray-rated cables should be installed. Grounding and bonding are mandatory for metallic trays. Tray fill limits must be calculated ...



Information on maintenance and system modification is also provided. Expand Your Knowledge and Unlock Your Learning Potential - Your One-Stop Source for Information!



NEC Article 392 outlines the key rules for installing and maintaining industrial cable tray systems. These systems, made from metal or plastic, are open structures designed to support ...



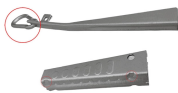
To ensure this, the designer must properly select a structurally satisfactory cable tray for their installation. Cable trays, and the conductors and cable they contain, must be listed or labeled by a ...



The Cable Tray Institute is making available the current edition of this practical guide for the proper installation of aluminum or steel cable tray systems. These guidelines will be useful to engineers, ...



Visit and search our extensive catalog of 800+ standards and technical documents.



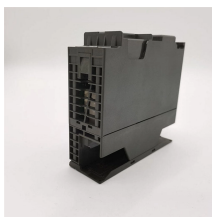
Cable tray system design shall 269 comply with National Electrical Code® (NEC®) Article 392, NEMA BI-50015 (formerly VE 1), and NEMA 270 FG 1, and follow safe work practices as described in NFPA ...



NEC Article 392 governs cable tray systems. Only approved tray-rated cables should be installed. Grounding and bonding are mandatory for metallic trays. Tray fill limits must be calculated ...



For cable tray installers: NEMA BI-50016-2024 (hereinafter referred to as NEMA BI-50016) is intended as a practical guide for the proper installation of cable tray systems.



NEMA BI-50016 (formerly VE 2) addresses shipping, handling, storing, and installing cable tray systems, and provides information on maintenance and system modification.

Contact Us

For more information, pricing, or custom network solutions, please contact us:

Website: <https://www.hashherbcafe.co.za>

Email: hello@hashherbcafe.co.za

Phone: +27 63 814 7295

Address: 15 Galaxy Road, Linbro Business Park, Johannesburg, 2065, South Africa

This document is for informational purposes only. Specifications subject to change without notice.

