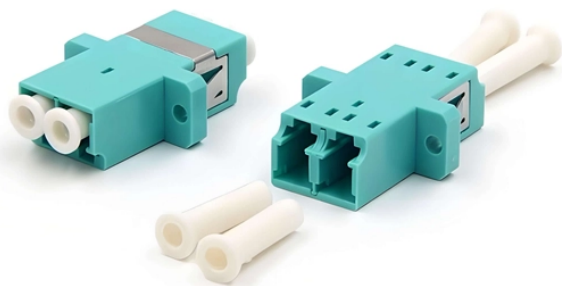


Laser LED Modification Diagram



Laser LED Modification Diagram



Figure 2 is a diagram of the simplest (and earliest) type of gallium arsenide laser. The laser is a brick-shaped piece of GaAs prepared by the process outlined above.



This diagram shows how the LD and the PD are connected. The photo diode optically senses the amount of light sent from the laser diode, this is called feedback. This feedback is sent to a drive ...



The information contained within this tutorial will give all the general information necessary to create an excellent laser diode system. For specific questions about laser diodes, mounts, and drivers please ...



Light Channeling (Waveguiding) in a LED In an edge-emitting LED, the higher refractive index active layer acts as a waveguide for photons traveling at less than the critical angle.



In this tutorial, we will show you how the Laser Diode Module works with Arduino together. The materials needed are listed as below: Diagram above shows the Laser Diode Module pinout, which contains ...



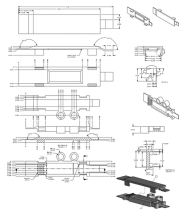
This is the ultimate beginner's guide to the laser diode. Learn how lasers work and how you can use them in your own projects with this guide.



ROHM offers laser diodes (LDs) for Light Detection and Ranging (LiDAR). This application note will introduce ROHM's LD line-up and show how to design the drive circuits of ROHM LDs.



Download scientific diagram | Schematic diagram of the LED structure used for the laser processing.



In this article, we will show how to connect and build a simple laser diode circuit to get light output from a laser diode.



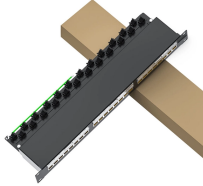
An LED is installed in a 25mm-diameter housing. The housing features two grooves that engage with the spring-loaded balls of the mounting plate, providing a secure hold. The



Both types of laser diode modulation are shown in Figure 1. Modulation can be useful for a variety of applications in the world of lasers.



This is the ultimate beginner's guide to the laser diode. Learn how ...



Those 2W 445nm diodes are available on the market for a reasonable price, so they were targeted. The laser power was to be modulated using isolated PWM input signal for obvious reasons of turning the ...

Contact Us

For more information, pricing, or custom network solutions, please contact us:

Website: <https://www.hashherbcafe.co.za>

Email: hello@hashherbcafe.co.za

Phone: +27 63 814 7295

Address: 15 Galaxy Road, Linbro Business Park, Johannesburg, 2065, South Africa

This document is for informational purposes only. Specifications subject to change without notice.

