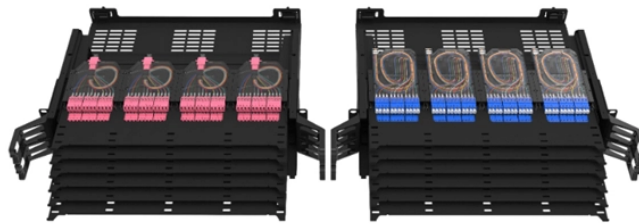


## Lao hollow fiber optic cable 24 cores



## Lao hollow fiber optic cable 24 cores



Design engineers or buyers might want to check out various 24 Core Fiber Optic Cable factory & manufacturers, who offer lots of related choices such as fiber optic cable, optical fiber cable and ...



Fiber optic cable is a cable containing one or multiple optical fibers that are used to transmit the signal. The optical fiber elements are typically individually coated with layers and contained in a protective ...



Hollow-core fiber (HCF) represents a new generation of optical fiber where light propagates through a center filled with air rather than glass, which considerably decreases latency and enhances speed by ...



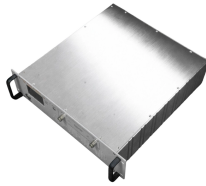
Find 24 Core Fiber Optic Cables related suppliers, manufacturers, products and specifications on GlobalSpec - a trusted source of 24 Core Fiber Optic Cables information.



Quality of the product is tested according to IEC Standards. Excellent crush and tensile resistance. Available in Single mode or Multi mode according to the demand of the customers.



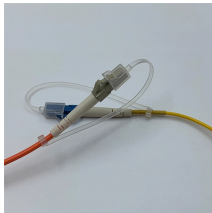
This cable adapts to indoor distribution mostly, as well as outdoor but with PE tube only. This cable has characters of soft, easy to peel, to facilitate follow, circular structure, small size, lightweight.



24 Core Single mode 9/125, Loose Tube jelly filled Cables, Multitube, Single Sheath - Outdoor Armored Cable - ECCS-Corrugated, complying to 9/125 ITU G.652.



An Aluminum Polyethylene Laminate (APL) is applied around the cable core, which is filled with the filling compound to protect it from water ingress. Then, the cable is completed with a PE sheath.



Discover 24 core fiber optic cable for FTTH & aerial use. CE/ROHS certified, G652D/G657A2 fibers, armored outdoor durability.



Loose tube gel-filled construction for superior fiber protection UV- and moisture-resistant design Rodent-resistant construction Dry Water Block cable core for ease of handling \* Applications: Interbuilding ...

## Contact Us

For more information, pricing, or custom network solutions, please contact us:

Website: <https://www.hashherbcafe.co.za>

Email: [hello@hashherbcafe.co.za](mailto:hello@hashherbcafe.co.za)

Phone: +27 63 814 7295

Address: 15 Galaxy Road, Linbro Business Park, Johannesburg, 2065, South Africa

This document is for informational purposes only. Specifications subject to change without notice.

