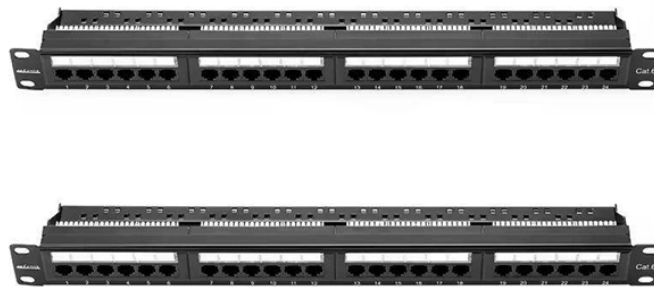


Korea 800G Optical Module 40G Distributor



Korea 800G Optical Module 40G Distributor



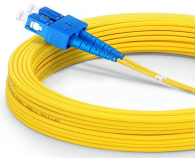
This investment allowed us to become an 800G, 400G, 200G and 100G Market Leader and we are proud to be seen by our customers as an important and trusted strategic transceiver partner.



With this agreement, Korea Advanced Materials has established a foundation to enter the high-speed optical module business, targeting data centers and future 6G communication infrastructure.



This is optical module optical application channel, this channel page shows you 400G QSFP-DD DR4/FR4/LR4/ER4, 100G QSFP28 LR4/ER4/ZR4/BIDI ZR4, 40G QSFP+ ZR4, 25G SFP28 ...



By seamlessly integrating advanced silicon photonics, ultra high speed circuit and packaging designs, Hyper Photonix offers a comprehensive range of high-speed optical transceivers - with data rate ...



For data centers, HiSilicon provides 40G iLR4/LR4, 40G LX4, 100G BiDi, 100G SR4, 100G CWDM4, 400G SR8, 400G FR4, 400G DR4, 400G SR4/VR4, 800G SR8, and 800G 2xFR4 optical modules. ...



FS offers a growing portfolio of optical transceivers, with speed range from 100M, 1G, 10G, 25G, 40G, 50G, 100G, 200G, 400G to 800G and beyond. The fiber optic transceiver modules can work in any ...



Covering 100G, 400G, and 800G modules. With support for FR4 (2km), LR4 (10km), ER4 (40km), and ZR4 (80km) applications, our DCI portfolio ensures reliable data and application continuity across sites.



ACON OPTICS' 1.6T, 800G, and 400G optical transceiver series are engineered to meet the rigorous bandwidth and performance requirements of next-generation data centers.



200G/400G/800G optical module features up to 40km transmission distances using QSFP56/QSFP-DD footprints for data center interconnect applications - FiberMall



We offer technical Q& As and real-device demos covering 400G/800G transceiver selection, compatibility, performance, and deployment in AI/HPC networks, bridging theory with ...

Contact Us

For more information, pricing, or custom network solutions, please contact us:

Website: <https://www.hashherbcafe.co.za>

Email: hello@hashherbcafe.co.za

Phone: +27 63 814 7295

Address: 15 Galaxy Road, Linbro Business Park, Johannesburg, 2065, South Africa

This document is for informational purposes only. Specifications subject to change without notice.

