

Japanese Distribution Box Craftsmanship

- ✓ Slow Axis Aligned (0°) - for standard sensing applications
- ✓ Fast Axis Aligned (90°) - for special modulation applications
- ✓ 45° Axis Aligned - for depolarizer applications



Overview

These boxes are called tomobako, and are traditionally made from kiri or paulownia wood. In fact most will have an artist's stamp that crosses the lid/base joint so the lid is always placed with correct. Exploring how Japan's reverence for boxes—crafted from paulownia wood, lacquer, and cloth—reflects centuries of artistry, order, and cultural meaning. “Boxes Almost as Valuable as What They Contain” by Nick Haramis (The New York Times, April 22, 2025) This article explores Japan's centuries-old. This is an important process that requires veteran craftsmen to use the intuition they have cultivated over the years to determine the drying conditions. This is the process of attaching the lid and bottom to the framework just before the glue dries completely. Made from the finest wood, these containers are far more than just practical storage—they are a reflection of Japan's deep-rooted. At MITSUBACHI. Each piece is more than an object—it's a story, carefully protected and displayed in traditional Japanese. The Art of Japanese Packaging: A Fusion of Tradition, Innovation, and Sustainability Japanese packaging stands as a remarkable intersection of art, culture, and functionality. As anyone who has bought a Japanese artist produced piece of

pottery will know, the pottery will arrive in a special wooden box.

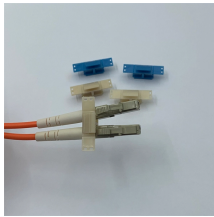
Japanese Distribution Box Craftsmanship



Kiribako, Japan's exquisite wooden boxes, showcase centuries of craftsmanship and artistry. Made from the finest wood, these boxes go beyond storage—they reflect Japan's rich heritage.



A look at Japan's love of packaging, from impeccably crafted cardboard to lacquered works of art.



This exploration into Japanese packaging, drawn from a comprehensive study and recent industry trends, delves into how it not only serves as a vessel for products but also embodies the rich ...



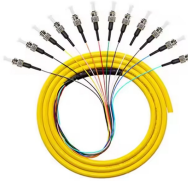
As anyone who has bought a Japanese artist produced piece of pottery will know, the pottery will arrive in a special wooden box. These boxes are called tomobako, and are traditionally made from kiri or ...



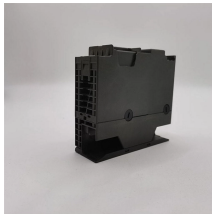
Every piece in our collection is a journey into the heart of Japan's craftsmanship. From the artistry of the ceramics to the story told by the packaging, we invite you to discover the beauty of ...



When you unwrap a gift in Japan, something unexpected happens: you don't want to throw away the box. The paper, the ribbon, the perfectly folded corners, all of it feels intentional. That sensation is ...



This article explores Japan's centuries-old reverence for packaging—particularly boxes—not merely as containers, but as objects of craftsmanship, meaning, and cultural continuity.



In this comprehensive article, we will delve into Japanese packaging, exploring its characteristics, cultural significance, and impact on both the local market and international design ...



At this time, we sort the lumber to determine its material quality and grain. The paulownia wood is glued together one by one with rubber pressure while tightening the frame, a process known ...



In this comprehensive article, we will delve into Japanese packaging, exploring its characteristics, cultural significance, and impact on both the local ...



This comprehensive guide explores Japan's top distribution box specialists - companies where safety standards aren't just regulations but cultural imperatives. Each combines traditional ...

Contact Us

For more information, pricing, or custom network solutions, please contact us:

Website: <https://www.hashherbcafe.co.za>

Email: hello@hashherbcafe.co.za

Phone: +27 63 814 7295

Address: 15 Galaxy Road, Linbro Business Park, Johannesburg, 2065, South Africa

This document is for informational purposes only. Specifications subject to change without notice.

