

# Is the length of cable trays calculated



## Overview

Definition: Cable tray size calculation involves determining the appropriate dimensions of a cable tray to accommodate the cables it will carry. Formula: ( $A = \frac{N \cdot D^2}{F}$ ) Example: ( $A = \frac{50 \cdot 0.4^2}{1}$ ) Our free calculator helps you determine the correct tray size based on NEC and IEC standards. This calculator features an interactive interface with advanced visualizations. 5 inches, in a 4-inch deep cable tray. But the standard range of cable tray has following dimensions: Widths range between 50mm to 1000mm, heights range from 25mm to 150mm, and the length are typically from 2.

## Is the length of cable trays calculated



Cable tray capacity refers to the maximum number of cables that can be installed in a cable tray without exceeding a specified fill ratio. The fill ratio is the percentage of the cross-sectional area of the tray ...



Learn how to calculate the perfect cable tray size and dimensions for your electrical project. This guide covers load capacity, fill ratios, and industry standards.



Easily calculate cable tray fill ratios with our free tool. Supports mixed cable sizes, NEC 40% rules, and metric/imperial units. Download your PDF report instantly.



Calculate cable tray sizing and fill capacity based on tray dimensions, cable diameter, number of cables, and maximum fill percentage per electrical code. Determine whether cables fit within safe fill limits.



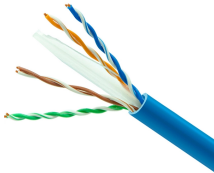
Calculate tray and ladder sizes by cable capacity with our IEC-compliant calculator for efficient and accurate electrical installations.



Learn how to calculate cable tray size step-by-step, including formulas, standard sizes, and practical tips. Find out the best practices for selecting the right dimensions and materials for your ...



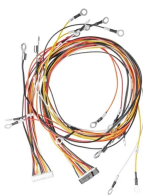
Cable tray size calculation is important for ensuring safe cable installation, proper heat dissipation, and enough spare capacity for future expansion. In this guide, you will learn how to ...



Learn cable tray sizing with accurate width and dimension calculations. Avoid common mistakes for efficient cable management. Read our expert guide now!



Our cable tray fill calculator is designed to compute the appropriate size and capacity of cable trays. You need to install 50 power cables, each with a diameter of 0.5 inches, in a 4-inch deep cable tray.



Calculate cable tray fill ratio, weight loading, and derating factors for multi-standard compliance. This calculator features an interactive interface with advanced visualizations. Open the full calculator for ...

## Contact Us

For more information, pricing, or custom network solutions, please contact us:

Website: <https://www.hashherbcafe.co.za>

Email: [hello@hashherbcafe.co.za](mailto:hello@hashherbcafe.co.za)

Phone: +27 63 814 7295

Address: 15 Galaxy Road, Linbro Business Park, Johannesburg, 2065, South Africa

This document is for informational purposes only. Specifications subject to change without notice.

