

# Is the distribution box considered a circuit Why



## Overview

A distribution box is an enclosure that houses circuit breakers, fuses, and other protective devices. Its primary function is to distribute incoming electrical power into subsidiary circuits while providing a protective mechanism against overloads, short circuits, and electrical. A distribution boxes is an essential device that manages the safe and efficient flow of electrical power throughout different areas of a building or facility. It helps organize, protect, and control electrical connections in residential, commercial, and industrial electrical systems. Distribution. Often referred to as a panel box, breaker box, or consumer unit, it serves as the central hub for distributing electricity from the main supply to different circuits within a building. In this article, we will explore what a distribution box is, how it works, the different types available, and why. The electricity supply chain consists of three primary segments: generation, where electricity is produced; transmission, which moves power over long distances via high-voltage power lines; and distribution, which moves power over shorter distances to end users (homes, businesses, industrial sites. What is a DB Box?

Types, Wiring, Selection Guide In the world of electrical installations, the term DB box —short for Distribution Board box —refers to the central unit that distributes incoming electrical power to multiple outgoing circuits in a building. Whether you're powering up a residential.

## Is the distribution box considered a circuit Why



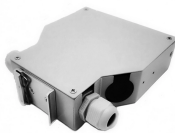
Distribution circuits, also known as express feeders or distribution main feeders, carry low-voltage power from the distribution substations to transformers closer to customer sites that further reduce the ...



A distribution boxes acts as the load center and main distributor of electrical power within a building. Also called a distribution board, panel board, breaker panel, or electric panel, it is the ...



In general, a distribution box is mainly used to distribute electrical power to multiple circuits and provide circuit protection. An electrical panel may refer to a broader assembly that ...



Electrical control panels and distribution boxes are the backbone of modern electrical systems. From powering homes and industrial facilities to supporting medium-voltage infrastructure, ...



A distribution box is an enclosure that houses circuit breakers, fuses, and other protective devices. Its primary function is to distribute incoming electrical power into subsidiary circuits while ...



“A distribution box, also called a distribution panel or board, is a cabinet that contains electrical components used for the delivery of electricity to several circuits of a system.”



Learn everything about DB box (distribution box): what they are, how they work, wiring diagrams, types, and how to choose the right one.



What's the difference between a distribution box and a sub-panel? A distribution box typically refers to the main electrical panel that receives power from the utility service. A sub-panel is ...



A power distribution box is a key part of any electrical system. It takes electricity from the main source and safely sends it to different circuits in a home, office, or industrial setup. Without it, ...



A distribution boxes is an essential device that manages the safe and efficient flow of electrical power throughout different areas of a building or facility. It is commonly used in homes, ...

## Contact Us

For more information, pricing, or custom network solutions, please contact us:

Website: <https://www.hashherbcafe.co.za>

Email: [hello@hashherbcafe.co.za](mailto:hello@hashherbcafe.co.za)

Phone: +27 63 814 7295

Address: 15 Galaxy Road, Linbro Business Park, Johannesburg, 2065, South Africa

This document is for informational purposes only. Specifications subject to change without notice.

