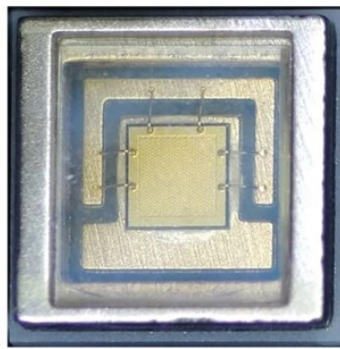


Is the cost of disassembling an AI server high



Overview

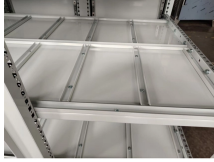
Mar 02, 2026 | AI server costs are being structurally repriced across memory, power, networking, and capital structure. Most infrastructure budgets are already outdated. Organizations deploying AI infrastructure often discover that GPU servers account for only 60% of their total investment. An 8×H100 AI server does not cost what it appears to cost. How much does it cost to train a model?

What about inference at scale?

The truth is, there's no simple answer—just like building a house, the final cost depends on the. While the value of AI models is undeniable, the total cost of ownership (TCO) for the underlying infrastructure is a complex calculation that many organizations are just beginning to grasp. Beyond the initial investment in hardware, the TCO for an AI datacenter is a multifaceted equation that. In 2025, according to industry estimates, U. server manufacturers and hyperscale cloud companies are expected to collectively pay several billion dollars in tariffs on imported components that power AI

systems. Tariffs of this nature are unprecedented, as historically, electronics were duty-free. Setting up an AI data center requires a significant investment, with costs shaped by hardware, facility design, power, cooling, security, and long-term operating needs. As artificial intelligence adoption expands, businesses must balance high-performance computing needs with scalable infrastructure.

Is the cost of disassembling an AI server high



High-performance AI nodes in 5U configurations mean that only 8-9 servers fit per rack, demolishing space utilization calculations and significantly increasing overall AI server data center costs.



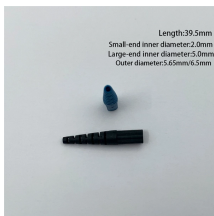
For enterprises planning new AI deployments, this introduces costs that are frequently absent from initial hardware budgets. Power delivery upgrades (new PDUs, breakers, transformers, and busways) are ...



For large enterprises or research institutions needing vast computational resources, the cost to set up an AI data center can easily exceed \$10 million. These setups usually involve high-performance GPUs, ...



AI infrastructure in 2026 is no longer defined by GPU price alone. Organizations investing in high-performance accelerators often focus on acquisition cost — but the real economics of AI deployment ...



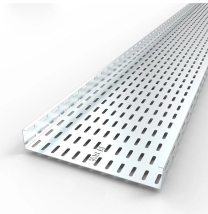
In 2025, according to industry estimates, U.S. server manufacturers and hyperscale cloud companies are expected to collectively pay several billion dollars in tariffs on imported ...



AI data center costs vary based on hardware, power, and location. Learn key expenses, cost-saving strategies, and investment insights for AI infrastructure.



As organizations integrate AI into their workflows, many are turning to on-premises solutions for better control, security, and cost management. The initial hardware investment is expensive, and the ...



Most people focus on the cost of the AI model or the software, but the biggest surprises often come from the prep work and the people. Getting your data ready—cleaning, structuring, and labeling it—can be ...



Memory as a whole is over half the cost of a classic server deployment. These costs ignore networking, which we covered in an earlier report. In general, while there will still be many ...



As organizations integrate AI into their workflows, many are turning to on-premises solutions for better control, security, and cost management. The initial hardware ...



High-performance AI nodes in 5U configurations mean that only 8-9 servers fit per rack, demolishing space utilization calculations and significantly increasing overall ...



While the value of AI models is undeniable, the total cost of ownership (TCO) for the underlying infrastructure is a complex calculation that many organizations are just beginning to grasp.

Contact Us

For more information, pricing, or custom network solutions, please contact us:

Website: <https://www.hashherbcafe.co.za>

Email: hello@hashherbcafe.co.za

Phone: +27 63 814 7295

Address: 15 Galaxy Road, Linbro Business Park, Johannesburg, 2065, South Africa

This document is for informational purposes only. Specifications subject to change without notice.

