

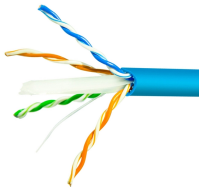
# Is the beam splitter an ONU



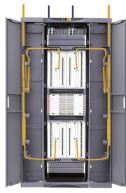
## Overview

Optical splitter is a component of PON network. Its function is to distribute downstream data and concentrate upstream data. A GPON system usually consists of an OLT (Optical Line Terminal) at the service provider's central office and multiple ONU (Optical Network Units) or ONT (Optical Network Terminals) close to the end user as optical splitters. In addition, the transmission between OLT and ONU/ONT adopts an optical. This disclosurerelates to the field of optical network technologies, and in particular, to a splitting apparatus, a dual-mode optical network unit (ONU), an optical network system, and a communication method. an optical line terminal(OLT) is connected to a splitter by using a feeder fiber, and an. A Passive Optical Network (PON) is a specific type of fiber-optic network that brings high-speed connectivity to end-users without requiring any electrically powered components in the distribution network. The optical network system uses an optical signal coupled to the branch distribution.

## Is the beam splitter an ONU



A fiber-optic splitter, also known as a beam splitter, is based on a quartz substrate of an integrated waveguide optical power distribution device, similar to a coaxial cable transmission system.



It is a passive device connecting OLT and ONU. Its function is to distribute downstream data and concentrate upstream data. The optical splitter has one upstream optical interface and ...



The OLT is connected to the optical splitter through a single optical fiber, and then the optical splitter connects to ONUs/ONTs. GPON adopts WDM to transmit data of different ...



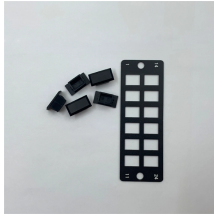
The structure of primary light splitting is an OLT-optical splitter-ONU, and the optical splitters from OLT to ONU are all connected in parallel. When using primary splitting, the splitter is ...



The structure of the primary splitting is OLT - Splitter - ONU, and the optical splitters from the OLT to the ONU are all parallel. When using the primary splitting, the optical splitter is ...



Two key components in a passive optical network are the optical line terminal (OLT) and the optical network terminal (ONT) which is sometimes also referred to as an optical network unit (ONU). These ...



Along this path, unpowered devices called optical splitters are used to divide the light signal from the single fiber into multiple separate paths. Each path then continues to an Optical ...



Communication between the ONUs needs to be switched on the OLT or on an upper-layer device; in other words, an optical signal channel between output ends of the splitter is not peer-to-peer to...



In contrast to an active optical network (AON), which connects various users to a single transceiver through a fiber optic branching tree and passive splitter/combiner unit, a PON is different ...



The splitter is one of the important components of the PON network. As an optical distribution network, it can connect OLT and ONU devices to distribute data downstream and concentrate data upstream.

## Contact Us

For more information, pricing, or custom network solutions, please contact us:

Website: <https://www.hashherbcafe.co.za>

Email: [hello@hashherbcafe.co.za](mailto:hello@hashherbcafe.co.za)

Phone: +27 63 814 7295

Address: 15 Galaxy Road, Linbro Business Park, Johannesburg, 2065, South Africa

This document is for informational purposes only. Specifications subject to change without notice.

