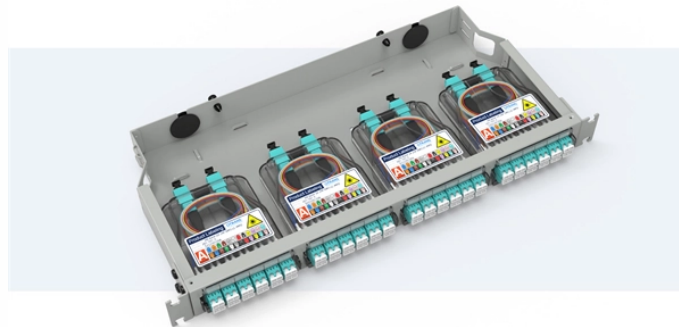


## Is the OLT switch the core component

### Pre-Terminated Patch Panel

- Multi-application support
- Flexible configurativon
- Modular design



Cable Gland Plug  
28mm Cable Gland Plug



MPO-LC up to 96 cores  
MPO direct connection 48 ports



Mounting Bracket  
Semi-open mounting holes

### Overview

The OLT is the core component of the optical access network, which is equivalent to a switch or router in a traditional communication network, and is also a multi-service providing platform. In short: The OLT (Optical Line Terminal) is the central control unit of a Passive Optical Network (PON). It converts data signals, manages bandwidth, and connects hundreds of users over a single optical fiber infrastructure. The primary functions of Fiber OLT are: The Pluggable ONU extends the fiber network into hard-to-reach places or last-mile applications. A Gigabit Ethernet Passive Optical Network (GEAPON) system is generally composed of an optical line terminal (OLT) at the service provider's central office and a number of optical network units (ONUs) or optical network terminals (ONTs) near end users, as well as the optical splitter. Optical Network Termination (ONT) /Optical Network Units (ONU) - Connects end-user devices (desktop, phones, and so on) into the GPON network. Provides the optical to. At the heart of this fiber network lie essential components— OLT, ODN, ONU, and ONT —that make this technology function seamlessly.

## Is the OLT switch the core component



Fiber Optical Line Terminal (OLT) from Cambium Networks is a Passive Optical Network (PON), which connects to a core switch by an Ethernet cable or a fiber cable.



In a GPON network, the OLT (Optical Line Terminal) and ONT (Optical Network Terminal) are the two most important devices. They work together to deliver internet from the service provider ...



The OLT is the core component of the optical access network, which is equivalent to a switch or router in a traditional communication network, and is also a multi-service providing platform.



OLT stands for Optical Line Terminal, a device that connects optical fibers and converts signals. This component plays a vital role in PON, as the PON OLT is the starting point of the entire ...



The OLT is the core device on the operator's end, converting electrical signals into optical signals and managing downstream data.



The Optical Line Terminal (OLT) is the central component of the PON system, typically housed at the service provider's central office. It functions like a router or switch in a traditional network but tailored ...



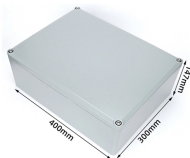
If the fiber optic network is a vast, information-speeding highway system, the OLT (Optical Line Terminal) is the central traffic control hub. It's the critical endpoint hardware that makes ...



An OLT is a core component of an optical access network. It is equivalent to the L2 switch or L3 router in a traditional communication network and functions as a multi-service platform.



In a GPON (Gigabit Passive Optical Network), the OLT is the core coordinator that ensures data flow in both directions across the Optical Distribution Network (ODN).



Optical Line Terminal (OLT) - Device that aggregates all optical signals from ONTs into a single multiplexed beam of light which is then converted into an electrical signal, formatted to ...

## Contact Us

For more information, pricing, or custom network solutions, please contact us:

Website: <https://www.hashherbcafe.co.za>

Email: [hello@hashherbcafe.co.za](mailto:hello@hashherbcafe.co.za)

Phone: +27 63 814 7295

Address: 15 Galaxy Road, Linbro Business Park, Johannesburg, 2065, South Africa

This document is for informational purposes only. Specifications subject to change without notice.

