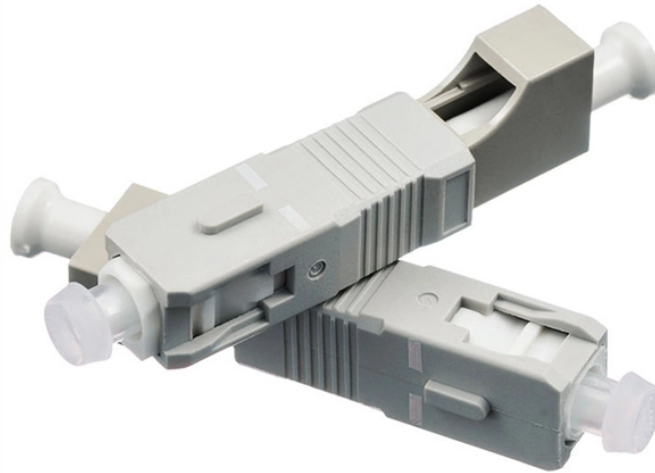


Is setting up a core switch difficult



Overview

As your virtual training wheels, we've broken down the task into its simplest parts so you can successfully create client VLANS, build DHCP systems, and assign access ports without skinning your knees. Check the model number of your shiny new switch. When you deploy a new switch, it's important to configure it properly to ensure optimal performance, security, and functionality. Why Configure a Switch?

Switches come with factory. A core switch in networking serves as the high-capacity backbone, italic centralizing data flow and ensuring efficient communication between different network segments. Just like riding a bicycle, nobody's born knowing how to setup a network switch. But, with the right guidance. To try to reduce the carnage I have decided to put together a guide to help people new to micro soldering and the switch modding scene.

Is setting up a core switch difficult



Keep fast, simple, and resilient. Use modular chassis switches with redundant supervisors. Avoid complex ACLs or packet inspection here. Design for high-speed links (10/40/100G).



To enable traffic, you must establish a core switch in the physical core layer. The core switch plays the leading role and supports other switches. Therefore, it is a high-capacity switch that ...



Core switch vs access switch comparison. Learn the differences in network design, performance, scalability, and which switch is best for your setup.



These reference architectures offer examples of the best way to configure your network for each use case. The Fortinet solutions in this guide make it easier to configure these challenging topologies. ...



Unlike access switches, which connect directly to end-user devices, the core switch focuses on aggregating and routing traffic between other switches, minimizing latency and ...



In this video we will learn how to configure cisco core switch active active using HSRP step by step.



I have helped many newbies get their switch up and running and have a lot of experience installing modchips, repairing switches, and troubleshooting software for customers.



When you deploy a new switch, it's important to configure it properly to ensure optimal performance, security, and functionality. This guide will walk you through the essential steps for setting up a base ...



I'm going to use two XOS based core switches, and a pair of X435 switches in my example below, you can extrapolate from there. Setting up an MLAG (Multi-Chassis Link ...



Follow these simple best practices to set up a new network switch. Just like riding a bicycle, nobody's born knowing how to setup a network switch. And this process is a little more advanced than, say, ...



To enable traffic, you must establish a core switch in the physical core layer. The core switch plays the leading role and supports other switches. ...

Contact Us

For more information, pricing, or custom network solutions, please contact us:

Website: <https://www.hashherbcafe.co.za>

Email: hello@hashherbcafe.co.za

Phone: +27 63 814 7295

Address: 15 Galaxy Road, Linbro Business Park, Johannesburg, 2065, South Africa

This document is for informational purposes only. Specifications subject to change without notice.

