

Is it safe to run cables through cable trays in the workshop



Overview

If not designed and installed properly, wiring inside cable trays may pose hazards such as fire, electric shock, and arc-flash blast events. Cable tray systems can pose serious safety risks if not properly designed or installed. The most common hazards include: □□ If ignored, these risks can lead to equipment failure, fire, or even fatal accidents Working with cable trays is not just a routine installation job. Cable trays can be part of a planned cable management system to support, route, protect, and provide a pathway for cable systems. In. Metal raceways, cable trays, cable armor, cable sheath, enclosures, frames, fittings, and other metal noncurrent-carrying parts that are to serve as grounding conductors, with or without the use of supplementary equipment grounding conductors, shall be effectively bonded where necessary to ensure. Installation of Cable in Cable Trays involves precise routing on support systems, NEC/IEC compliance, grounding, ampacity derating, bend radius control, segregation of services, fire safety, labeling, and reliable cable management for industrial and commercial facilities. You should consider it as a series of instructions that make the buildings resistant to.

Is it safe to run cables through cable trays in the workshop



Working with cable trays is not just a routine installation job. If a tray is overloaded, corroded, poorly supported, or contains live cables, it can create severe risks for workers and ...



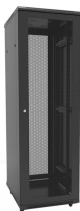
Cable tray layout must take into consideration the design limits of the cable. To minimize damage and verify integrity after installation, follow the practices outlined in cable handling and testing procedures ...



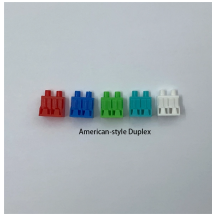
To ensure that a cable tray is safe, all the bolts should be tight, and all the connections should also be clean. Without a properly bonded tray, the tray will not insulate the building in case of ...



If not designed and installed properly, wiring inside cable trays may pose hazards such as fire, electric shock, and arc-flash blast events.



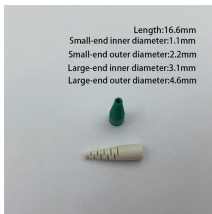
Workplace safety is of paramount importance, and when it comes to cable management, the proper use of cable trays can significantly contribute to creating a safe and accident-free ...



Cable assemblies and flexible cords and cables shall be supported in place at intervals that ensure that they will be protected from physical damage. Support shall be in the form of staples, cables ties, ...



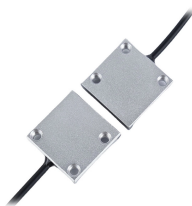
Answer: Yes; cables are tied down in cable trays to keep the cables in the cable tray, to maintain spacing between cables, or to segregate or confine certain types of cables to specific locations.



This article explains the main requirements and good practices for cable tray systems, including tray types, materials, loading, supports, bonding, cable selection, and installation details.



The document outlines safety procedures for installing wire ways and cable trays, emphasizing compliance with OSHA regulations to ensure a safe working environment.



Working with cable trays is not just a routine installation job. If a tray is overloaded, corroded, poorly supported, or contains live cables, it can create ...

Contact Us

For more information, pricing, or custom network solutions, please contact us:

Website: <https://www.hashherbcafe.co.za>

Email: hello@hashherbcafe.co.za

Phone: +27 63 814 7295

Address: 15 Galaxy Road, Linbro Business Park, Johannesburg, 2065, South Africa

This document is for informational purposes only. Specifications subject to change without notice.

