

## Is fiber optic transmission more stable on switches



### Overview

Are fiber optic switches more reliable than electronic switches?

Fiber optic switches are generally considered to be more reliable than electronic switches, due to their immunity to electromagnetic interference and lower susceptibility to damage from environmental factors. The switching speed of a fiber optic switch depends on the specific type and configuration of the switch. Unlike traditional electrical switches, which process data via copper-based transmission, fiber optic variants utilize light signals to improve data integrity, speed, and resistance to electromagnetic. Incorporating redundant fiber links, switches, and critical components helps mitigate failures and ensures uninterrupted service delivery. This redundancy significantly reduces downtime and enhances network resilience, a critical factor in today's fast-paced digital environment. Common optical module types such as SFP.

## Is fiber optic transmission more stable on switches



Compared to traditional copper network switches, fiber optic switches significantly improve data transfer rates, reduce latency, and support high-demand applications by integrating into a fiber ...



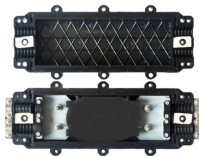
Fiber is the general name for certain carbohydrates -- usually parts of vegetables, plants, and grains -- that the body can't fully digest. While fiber isn't broken down and absorbed like...



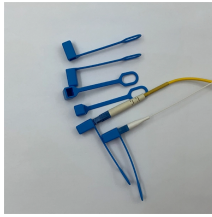
Fiber is a carbohydrate found in fruits, vegetables and grains that regulates your digestive system, lowers cholesterol and helps you stay full longer.



Learn how to troubleshoot fiber networks. Identify common issues like high loss, dirty connectors, and signal drops, with practical solutions for optical links.



Fiber optic switches are an essential component of modern communication systems. They provide a way to control the flow of light in fiber optic networks, allowing for more efficient and ...



What are the 10 best foods for fiber? Some top choices to add to the diet are chickpeas, lentils, split peas, oats, apples, pears, almonds, chia seeds, Brussels sprouts, and avocado.



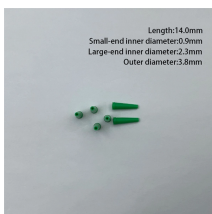
Top fiber internet providers include AT& T, Google Fiber, Quantum Fiber and Verizon Fios. Fiber plans start at \$29.99/mo. with Frontier Fiber.



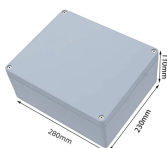
If the goal is to add more fiber to your diet, there are lots of great options. Fruits, vegetables, grains, beans, peas and lentils all help you reach that daily fiber goal.




What are Fiber Optic Transceivers? Fiber optic transceivers are electro-optical devices that convert electrical signals used by network equipment (switches, routers, servers) into optical ...





Eat more fiber with six easy expert tips for daily gut health and digestion. Learn simple ways to add fiber to your diet, including foods and habits to try.





Learn how to choose the right SFP module for your network and avoid common compatibility mistakes. This practical guide explains SR vs LR, singlemode vs multimode, ...

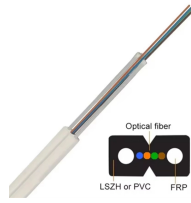
	<p>Fiber is a type of carbohydrate that the body can't digest. Though most carbohydrates are broken down into sugar molecules called glucose, fiber cannot be broken down into sugar molecules, and instead ...</p>
-----------------------------------------------------------------------------------	---------------------------------------------------------------------------------------------------------------------------------------------------------------------------------------------------------------------

	<p>Fiber is found in plant-based foods, particularly beans, nuts, fruits, and vegetables. Fiber has many health benefits, including reducing risk of cardiovascular disease, type 2 diabetes, and ...</p>
-----------------------------------------------------------------------------------	-----------------------------------------------------------------------------------------------------------------------------------------------------------------------------------------------------------

	<p>Incorporating redundant fiber links, switches, and critical components helps mitigate failures and ensures uninterrupted service delivery. This redundancy significantly reduces downtime ...</p>
------------------------------------------------------------------------------------	------------------------------------------------------------------------------------------------------------------------------------------------------------------------------------------------------

	<p>Get the facts on dietary fiber foods (soluble, insoluble), high-fiber foods, its health benefits (weight loss), and why it's important to get your daily intake of fiber.</p>
-------------------------------------------------------------------------------------	----------------------------------------------------------------------------------------------------------------------------------------------------------------------------------

	<p>By using fiber optic technology, these switches enable longer transmission distances and greater data integrity, which is crucial for large-scale or geographically distributed networks.</p>
-------------------------------------------------------------------------------------	--------------------------------------------------------------------------------------------------------------------------------------------------------------------------------------------------

	<p>In the complex architecture of modern communication networks, switches act as crucial hubs for data transmission. Among their various components, optical modules and optical interfaces ...</p>
-------------------------------------------------------------------------------------	-----------------------------------------------------------------------------------------------------------------------------------------------------------------------------------------------------



Fiber optic systems address many of these limitations. They deliver higher bandwidth than copper and are less vulnerable to external noise or monitoring. However, like copper, fiber ...



Unlike traditional electrical switches, which process data via copper-based transmission, fiber optic variants utilize light signals to improve data integrity, speed, and resistance to electromagnetic ...



Incorporating redundant fiber links, switches, and critical components helps mitigate failures and ensures uninterrupted service delivery. This ...

## Contact Us

For more information, pricing, or custom network solutions, please contact us:

Website: <https://www.hashherbcafe.co.za>

Email: [hello@hashherbcafe.co.za](mailto:hello@hashherbcafe.co.za)

Phone: +27 63 814 7295

Address: 15 Galaxy Road, Linbro Business Park, Johannesburg, 2065, South Africa

This document is for informational purposes only. Specifications subject to change without notice.

