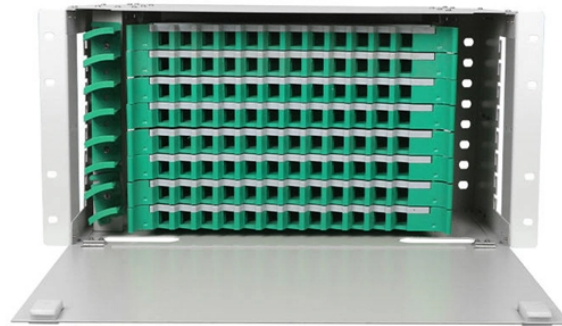


## Is all cable tray wiring made of cables



### Overview

National Electrical Code (NEC) and UL 1277 standard, a Tray Cable is a factory-assembled, multi-conductor cable (two or more insulated conductors, with or without a grounding conductor) enclosed in a non-metallic overall jacket. In the electrical wiring of buildings, a cable tray system is used to support insulated electrical cables used for power distribution, control, and communication. It is used to manage cables for light B manufactures its cable tray in a range of materials with a variety of finishes. The selection of material and finish is a function of the environment in which it is used. Many cable tray rated cables include a crush and impact test as part of the listing and are rated as exposure rated (ER). Acting as a rigid pathway, the tray supports large networks of cables, preventing tangling and physical damage. Tired of the time-consuming and costly process of pulling single-conductor wires through conduit for your factory's cable trays?

There's a smarter, more efficient solution engineered specifically for modern industrial environments: Tray Cable (TC).

## Is all cable tray wiring made of cables



Wire mesh cable trays are similar to perforated cable trays but they are made of a wire mesh, so they offer a higher degree of ventilation, though they offer slightly less protection, than ...



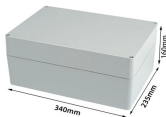
Its core advantage is its approved installation method: TC cables are rated for direct installation in cable trays, raceways, and channels. Certain types, like T C-ER (Exposed Run), are ...



Discover the essential guide to cable tray systems. Learn about ladder, trough, and wire mesh types, key components, and expert installation tips ...



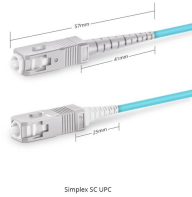
To that end this Bulletin is intended to discuss the types of cables most frequently used in cable trays and the wiring methods permitted in cable trays under the National Electric Code (NEC) NFPA 70.



Depending on the cable tray type and cable, there are various requirements for spacing and loading cables per Article 392. These requirements are based on the allowable cable fill area in a cable tray.



Acting as a rigid pathway, the tray supports large networks of cables, preventing tangling and physical damage. This system functions as a durable alternative to traditional methods like ...



Cable tray is considered to be a system. It must provide continuous support for cables, and the electrical continuity of the cable tray system must be maintained.



Discover the essential guide to cable tray systems. Learn about ladder, trough, and wire mesh types, key components, and expert installation tips for safe and organized cable management.



These cables are composed of one or more conductive wires, insulated to prevent accidental contact and short circuits. Their primary role is to enable the flow of electric current from a power source to ...



This article explains the main requirements and good practices for cable tray systems, including tray types, materials, loading, supports, bonding, cable selection, and installation details.



In the electrical wiring of buildings, a cable tray system is used to support insulated electrical cables used for power distribution, control, and communication.

## Contact Us

For more information, pricing, or custom network solutions, please contact us:

Website: <https://www.hashherbcafe.co.za>

Email: [hello@hashherbcafe.co.za](mailto:hello@hashherbcafe.co.za)

Phone: +27 63 814 7295

Address: 15 Galaxy Road, Linbro Business Park, Johannesburg, 2065, South Africa

This document is for informational purposes only. Specifications subject to change without notice.

