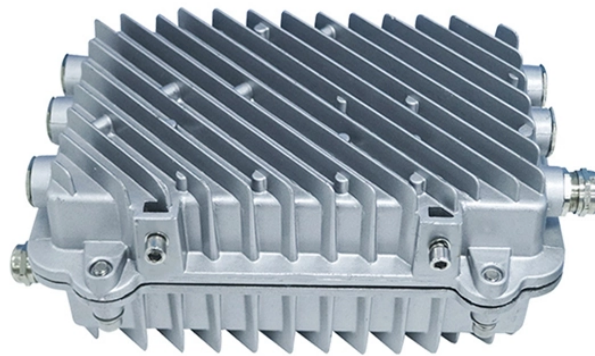


## Is a slotted optocoupler a type of optocoupler



### Overview

The device shown in Figure 3 is known as a slotted optocoupler, and has a slot molded into the package between the LED light source and the phototransistor light sensor. Figure 1 shows the basic form of such a device. With an optocoupler, the only contact between the. Optocouplers, also known as opto-isolators, uses infrared light to transfer electrical signals between two electrically isolated circuits and are commonly classified by their photosensitive output device What is an Optocoupler?

An optocoupler (also called an opto-isolator, photo-coupler, or optical. An opto-isolator (also called an optocoupler, photocoupler, or optical isolator) is an electronic component that transfers electrical signals between two isolated circuits by using light. Opto-isolators prevent high voltages from affecting the system receiving the signal. Unlike transformers or capacitors, which can only transfer AC signals across the isolation barrier, optocouplers can.

## Is a slotted optocoupler a type of optocoupler



Rifocyna, rifamicina, solución indicada en infecciones cutáneas como piodermatitis, dermatitis, úlceras cutáneas, abscesos, heridas infectadas. Kendrick. RX



Each logic family (e.g. LSTTL or CMOS types) may have different logic voltage levels and different input and output current requirements, and optocouplers can provide a convenient way of interfacing two ...



This type of optocoupler configuration forms the basis of a very simple Solid State Relay application. It can be used to control any AC mains powered loads such as lamps, motors or resistive ...



Rifocyna solución en spray 20 ml Compra Farmacia con los precios más bajos. Encuentra más productos de Ropa deportiva Caballero y recibe en casa con Bodega Aurrera en línea.



Optocouplers (also known as an optoisolator or Photocoupler) are indispensable in electronic circuit design where signal isolation, noise reduction, and system protection are critical.



An optocoupler, also known as photocoupler or opto-isolator, is a device which can transfer an electrical signal across two galvanically-isolated circuits by way of optical coupling.



Rifamicina. Antiestafilococico bactericida. Env. x 20ml. Acción terapéutica. Antibiótico. Propiedades. La rifamicina SV es un antibiótico de la familia de las rifamicinas de origen natural. Se utiliza en forma ...



Compra Rifocyna solución en spray 20 ml a un súper precio. Compra todo en Alta Especialidad con envío a domicilio. Tu tienda en línea Walmart



RIFOCINA sirve para antibiótico. Conoce su dosis, efectos secundarios, contraindicaciones y precio. Grupo Sanofi Aventis - Peru.



Figures 3 and 4 show two other types of optocoupler. The device shown in Figure 3 is known as a slotted optocoupler, and has a slot molded into the package between the LED light source and the ...



¿Qué es la rifocina? Rifocina® es la marca comercial de un agente bactericida de amplio espectro el cual utiliza como principio activo la rifamicina, un compuesto químico con efecto sobre ...



Rifocyna solución atomizador 20 ml, medicamento bajo supervisión médica disponible en Farmacia San Pablo con envío gratis a domicilio.



Rifocyna Cutaneo 20 Ml. Spray Devoluciones Este producto no puede devolverse por políticas sanitarias o condiciones de venta.



An optocoupler (or an optoelectronic coupler) is basically an interface between two circuits which operate at (usually) different voltage levels. The key advantage of an optocoupler is the electrical ...



La Rifocina es un medicamento que tiene rifamicina, que es un antibiótico, en su composición, el cual está indicado en el tratamiento de infecciones en la piel, causadas por microorganismo sensibles a ...



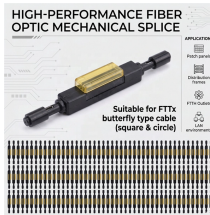
Tu receta medica y Rifocyna 1g/100ml Sol. caja C/Fco 20 ml. En nuestra tienda en línea. Farmacias Benavides



Some optocouplers have a slotted coupler/interrupter configuration. This configuration refers to optocouplers with an open slot between the source and sensor that has the ability to influence ...



An optocoupler (or an optoelectronic coupler) is basically an interface between two circuits which operate at (usually) different voltage levels. The key advantage of an optocoupler is the electrical ...



Optocouplers (also known as optoisolators) are electronic components that transfer electrical signals between two isolated circuits using light. They are widely used for galvanic ...



OPTOCOUPLEDERS OR OPTOISOLATORS are devices that enable efficient transmission of DC signal and other data across two circuit stages, and also simultaneously maintain an excellent ...

## Contact Us

For more information, pricing, or custom network solutions, please contact us:

Website: <https://www.hashherbcafe.co.za>

Email: [hello@hashherbcafe.co.za](mailto:hello@hashherbcafe.co.za)

Phone: +27 63 814 7295

Address: 15 Galaxy Road, Linbro Business Park, Johannesburg, 2065, South Africa

This document is for informational purposes only. Specifications subject to change without notice.

