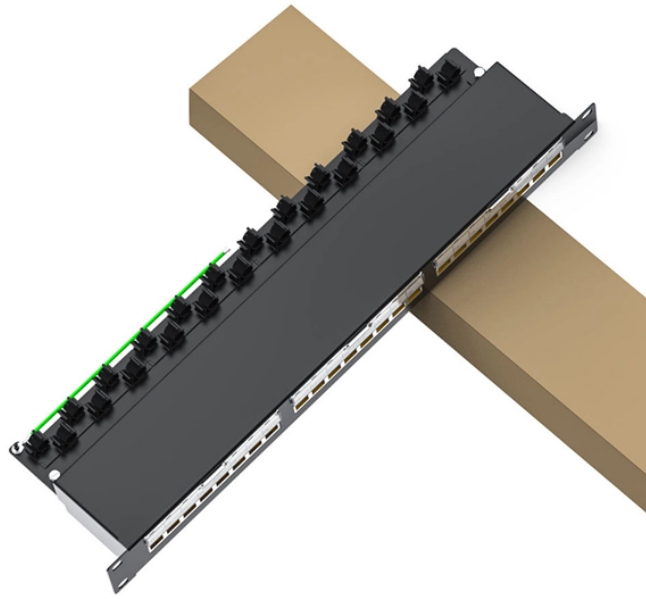


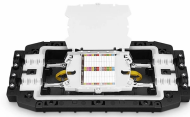
Intra-optical module calibration



Intra-optical module calibration



We can perform optical metrology and calibration on your behalf, or we can guide you in establishing metrology and calibration testbenches for use in your own laboratory or in a production environment.



Efficient cost-effective optical integration approaches are necessary for optical interconnects to realize their potential for improved power efficiency at higher data rates



In this white paper we explore how the DWDM functions, parameters, and operational aspects of “smart” optical pluggable modules can be handled more efficiently in order to deal with the ...



To maximize cooling efficiency and minimize module case temperature, the optical module's heat spreader flatness should be as uniform as possible across the CPO assembly.



This application note focuses on the SFF-8472 and XENPAK standards for optical modules. It shows how variations in photodetector gain affect measured power levels.



Regular Ecal calibration ensures continued accuracy and reliability. The following case study shows performance results for Keysight Technologies, Inc., analysis of 2,000 Ecal modules returned by ...



By integrating a monitoring photodiode (MPD) within the optical module and implementing a temperature current control algorithm, efficient wavelength locking is achieved ...



There are 2 ways to zero the fiber optic sensor on the FiberOptix intra-aortic balloon (IAB): manually and automati-cally. For either zero procedure, the blue FOS slide and black CAL key must be connected ...



We offer specialized optical calibration services for mission-critical navigation and targeting systems. Our experts verify precision optics and optical system alignment in heads-up ...



Calibration and alarm threshold data is written during device manufacture. In addition to generating digital readings of internal analog values, the device generates various status bits, based on a ...



Optical module transceivers are the main end-to-end components in fiber optic systems and optical communications. QSFPTEK suppliers have strict transceiver testing and quality control processes, ...

Contact Us

For more information, pricing, or custom network solutions, please contact us:

Website: <https://www.hashherbcafe.co.za>

Email: hello@hashherbcafe.co.za

Phone: +27 63 814 7295

Address: 15 Galaxy Road, Linbro Business Park, Johannesburg, 2065, South Africa

This document is for informational purposes only. Specifications subject to change without notice.

