

Integrated emergency power supply and emergency lighting for fire protection



Integrated emergency power supply and emergency lighting for fire



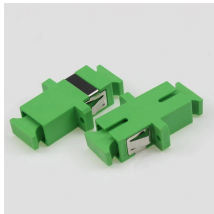
These systems include emergency lighting, exit signs, fire detection and alarm systems, emergency power supplies, and means of egress components. Proper design, installation, and maintenance of ...



Effective wiring design for emergency system circuits integrates electrical, fire protection, and life safety requirements into a coherent system. Proper routing, segregation, fire protection, and ...



Quickly implement an intelligent fire safety and security system using a combined AC-DC power supply, battery charger, DC UPS, and communications monitor.



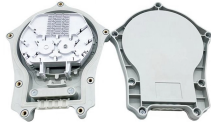
When designing power for emergency illumination, it is important for the designer to determine the level, class and type of the emergency power supply system required for the ...



There are several factors to consider when planning an emergency lighting solution including controls and fixtures in the space, individual project needs, and the type of backup power ...



NFPA 110 is the standard for emergency and standby power systems—and it plays a vital role in ensuring your exit signs and emergency lights stay lit during power failures. This guide explains ...



For more than 60 years, Myers Emergency & Power Systems has designed, manufactured, and advanced superior backup power solutions. Industry leaders across the emergency lighting, rail ...



When power is lost, an emergency power source activates and supplies power to the lighting system designed for emergency operation. The IBC allows a battery-powered system, ...



Designed to ensure an uninterrupted power supply during power outages, our products are not only suitable for emergency lighting needs but also for powering other vital safety elements.



The nLight AIR EM solution is designed for projects with external emergency power sources, such as generators or inverters, and delivers a lower cost of install than traditional solutions by eliminating ...

Contact Us

For more information, pricing, or custom network solutions, please contact us:

Website: <https://www.hashherbcafe.co.za>

Email: hello@hashherbcafe.co.za

Phone: +27 63 814 7295

Address: 15 Galaxy Road, Linbro Business Park, Johannesburg, 2065, South Africa

This document is for informational purposes only. Specifications subject to change without notice.

