

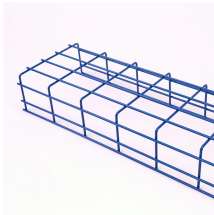
## Integrated Distribution Box Label



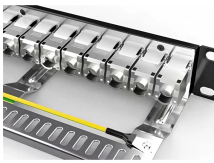
## Integrated Distribution Box Label



Using labels provided by CMSG, mark equipment likely to require examination, adjustment, servicing, or maintenance while energized reminding building occupants to maintain clear space as required by ...



With its compact design, attractive appearance, and cost-effectiveness, the JP series is an ideal solution for urban and rural power grid upgrades, representing the new generation of outdoor distribution ...



With the need to hard wire I/O connections removed and variants coming equipped with identification labels and integrated LEDs, Bulgin's distribution boxes help to save on costs associated with ...



The Kenworth Power Distribution Box Label (S53-1120) is a component designed to identify and provide critical information for power distribution boxes in commercial vehicles.



Integrated MCB mounting base with compact structure for easy installation, ensuring secure breaker fixation and stable busbar connection. Complies with IEC/EN 60947-7-1 standard, offering excellent ...



My panel box labels had become unsightly due to the constant adding of items controlled by each circuit. With this circuit panel labeling kit, I was able to make the labeling much more clear.



My panel box labels had become unsightly due to the ...



Premium Quality Non-Tearable Vinyl Paper Circuit Breaker Directory Label with Fuse Stickers for Fuse Panel, Marker Sign for Electrical Panel. Strong Adhesive. Up to 48 Entries. House or Commercial Use.



Learn best practices for documenting and labeling electrical equipment. Offer solutions and tips for electrical distribution system documentation. Consistent documentation is an important safety ...



Understand your distribution box labels to identify circuits, improve safety, and troubleshoot electrical issues in your home with confidence.



Distribution boxes are a great way to increase flexibility and cut costs. They lower your labor costs by reducing installation and troubleshooting time. They take up less space than loose wires, look neater ...

## Contact Us

For more information, pricing, or custom network solutions, please contact us:

Website: <https://www.hashherbcafe.co.za>

Email: [hello@hashherbcafe.co.za](mailto:hello@hashherbcafe.co.za)

Phone: +27 63 814 7295

Address: 15 Galaxy Road, Linbro Business Park, Johannesburg, 2065, South Africa

This document is for informational purposes only. Specifications subject to change without notice.

