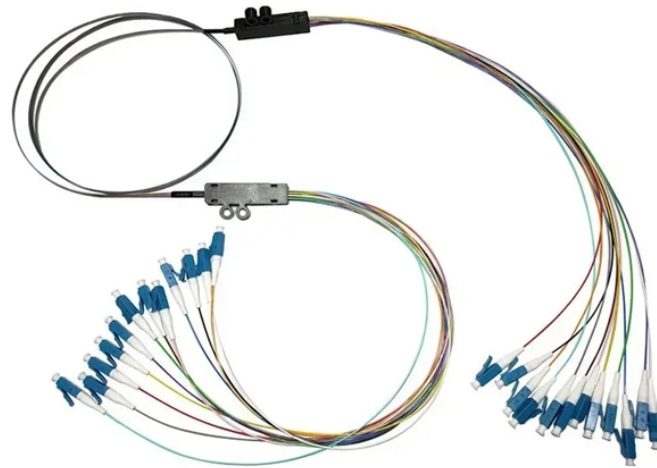


Installing a pluggable optical module QSFP



Overview

Learn how to install and remove OSFP and QSFP transceiver modules safely using proper ESD and handling procedures. Remove the protective cover from the opposite end of the pull-tab. QSFP Module Install With the pull-tab facing the left, align the QSFP module with the socket opening at PORT 0 or.

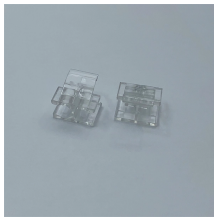
Installing a QSFP+ or QSFP28 Module You can install or remove QSFP modules in your switch without powering off the system. QSFP modules contain Class 1M lasers. Invisible laser radiation can occur when laser connections are unplugged. It's commonly used in switches and routers with SFP ports for fibre optic connectivity. It's used in data centres and.

Page 2 Preface Audience: This installation note provides instructions for installing FS Quad Small Form-factor Pluggable 28 (QSFP28) and Small Form-factor Pluggable Double Density (SFP-DD) transceiver modules.

Installing a pluggable optical module QSFP



This section provides the installation, cabling, and removal instructions for the Quad Small Form-Factor Pluggable (QSFP) transceiver modules. Refer to the Cisco Transceiver Modules ...



Remove any rubber dust covers from the port where you are installing the QSFP module. Holding the QSFP module by its sides, insert the QSFP module into the port on the switch or module (see ...



QSFP modules employ various optical connector types depending on the application and reach requirements. The mechanical interface must ensure proper fiber alignment and minimize ...



How to Install 40G QSFP+ Transceiver Modules?
This installation note provides the installation instructions for the 40-Gigabit Quad Small Form-Factor Pluggable Plus (QSFP+) transceiver modules.



This installation note provides instructions for installing FS Quad Small Form-factor Pluggable 28 (QSFP28) and Small Form-factor Pluggable Double Density (SFP-DD) transceiver modules.



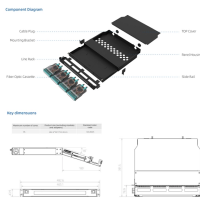
SFP and other optical modules are key components of any fibre optic network. They enable high-speed connections between active equipment and allow system scalability without the ...



If you cannot push the optical module into an optical module cage any longer, the optical module is in good contact with the board connector. When installing a CFP optical module, push the module ...



With the pull-tab facing the left, align the QSFP module with the socket opening at PORT 0 or PORT 1 on the PXIe-7890/7891. Carefully slide the QSFP module into the port. Use your thumb ...



Page 2 Preface Audience: This installation note provides instructions for installing FS Quad Small Form-factor Pluggable 28 (QSFP28) and Small Form-factor Pluggable Double Density (SFP-DD) ...



Use the information in this topic to install QSFP-DD optical transceivers and fiber-optic cables. Juniper Networks transceivers are hot-removable and hot-insertable field-replaceable units (FRUs). You can ...

Contact Us

For more information, pricing, or custom network solutions, please contact us:

Website: <https://www.hashherbcafe.co.za>

Email: hello@hashherbcafe.co.za

Phone: +27 63 814 7295

Address: 15 Galaxy Road, Linbro Business Park, Johannesburg, 2065, South Africa

This document is for informational purposes only. Specifications subject to change without notice.

