

Installation of galvanized pipes through cable trays



Installation of galvanized pipes through cable trays



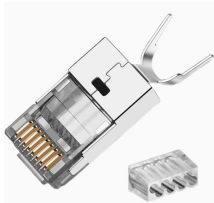
To ensure that the complete ladder tray wiring system performs as designed, it is important that it is properly installed. Personal injury as well as property damage will result if proper installation and ...



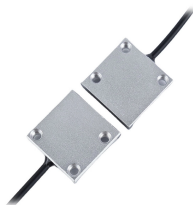
Step-by-step instrumentation cable tray installation guide with safety tips, standards, inspections, and downloadable Excel checklist.



The Cable Tray Institute is making available the current edition of this practical guide for the proper installation of aluminum or steel cable tray systems. These guidelines will be useful to engineers, ...



Cable tray length is selected based on the load to be supported, the distance between the supports (also referred to as the span), and handling and installation constraints.



Some of these criteria include the required load that the cable tray must support, the distance between the cable tray supports, and ease of handling and installation.



Step-by-step cable tray and conduit installation method with safety, quality and inspection procedures as per IEEE standards.



Our wind certification report provides you with list of acceptable B-Line series cable tray supports, fittings and covers based off of the environmental conditions, cable loading, and type of cable tray in your ...



Discover galvanized cable trays for industrial wiring, with installation tips, load data, and corrosion-resistant solutions for long-lasting cable management.



This method statement covers the site installation of the cable tray & ladders and the requirements of checks to be carried out.



This document provides a method statement for installing surface conduits, cable trays, and trunking. It outlines the scope of work, necessary equipment, health and safety considerations, required ...



Some applications may require the cable tray to support the weight of a single, dead object in addition to the cable loads. Specifications typically require this to be applied at the midpoint of the span between ...

Contact Us

For more information, pricing, or custom network solutions, please contact us:

Website: <https://www.hashherbcafe.co.za>

Email: hello@hashherbcafe.co.za

Phone: +27 63 814 7295

Address: 15 Galaxy Road, Linbro Business Park, Johannesburg, 2065, South Africa

This document is for informational purposes only. Specifications subject to change without notice.

