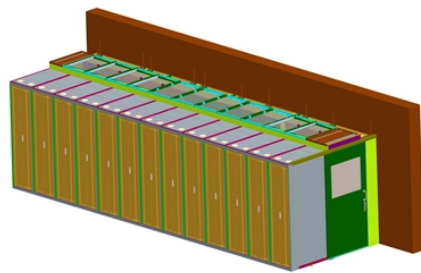


Installation height of surface-mounted electrical boxes



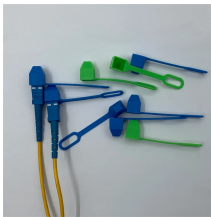
Overview

A standard height of 6'7" off the floor, coupled with a six-inch minimum clearance around the sides of the panel, ensures that safety and operational efficiency are optimized. Dedicated Space: Dedicated electrical space is required for panel from the floor to a height of 1. Mounting Height: Mounting height of panelboards should not higher than 6 ft 7in. Electrical safety standards require that the center of the grip of the highest operating handle, when the circuit breaker is in its highest position, must not. A standard height of 6'7" or less is often considered optimal. The placement ensures that the circuit breaker within the control center is easily accessible, underscoring the significance of safety and operational efficiency.

Installation height of surface-mounted electrical boxes



Determine the precise, code-compliant height for mounting your electrical panel, including crucial working space and location restrictions.



The distance between the distribution box and the switch box should not exceed 30 meters, and the horizontal distance between the switch box and the fixed electrical equipment it controls should not ...



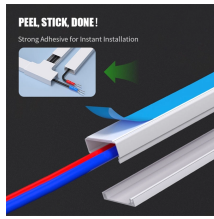
Particularly, the electrical rule book states that a panel must be installed no less than four feet off the floor. In the same vein, the height of the electrical panel must not be more than six feet ...



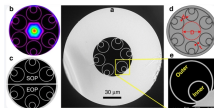
For a typical residential installation, the standard electrical outlet height is 12 to 16 inches from the finished floor to the bottom of the device box. The common light switch height is typically 48 inches ...



If the height of the electrical equipment is less than 6.5 feet, but when mounted, the top of the equipment exceeds 6.5 feet, the minimum workspace height shall be equal to the height of the equipment.



Explore comprehensive insights on the appropriate height for mounting electrical panels, abiding by the NEC standards for safety and efficiency. Learn practical tips and expert advice to ...



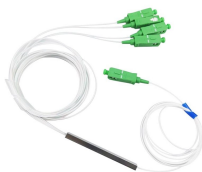
Surface-mounted electrical boxes must be raintight/weatherproof, while exterior light fixtures do not require GFCI protection. Outdoor receptacles should be installed at the front and rear ...



FOR LIGHTING FIXTURES MOUNTING HEIGHTS SEE SCHEDULE AND DRAWINGS. 48" TO HIGHEST OPERABLE PART (SIDE OR FORWARD ACCESS). FIRE ALARM VISUAL ONLY ...



The requirement was changed to permit other equipment associated with the electrical installation to be installed above or below the electrical equipment as long as it did not extend more than 6 inches ...



Install a distribution box at 4.5 to 5.5 feet high for safety, accessibility, and compliance. This height ensures easy use and protection from hazards.

Contact Us

For more information, pricing, or custom network solutions, please contact us:

Website: <https://www.hashherbcafe.co.za>

Email: hello@hashherbcafe.co.za

Phone: +27 63 814 7295

Address: 15 Galaxy Road, Linbro Business Park, Johannesburg, 2065, South Africa

This document is for informational purposes only. Specifications subject to change without notice.

