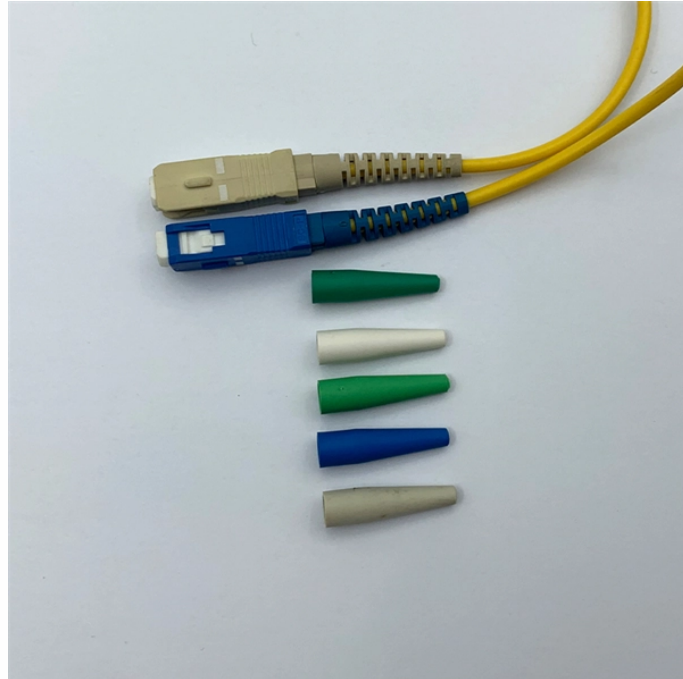


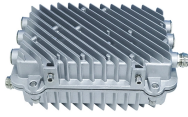
# Installation height of fire protection module in distribution box



## Overview

The proper installation of a distribution box involves placing it at the right height to ensure safety and convenience. Detectors shall be installed on the ceiling or on the wall within 300 mm (12 in. This height also safeguards the box from potential. VISUAL DEVICE NOT LESS THAN 90" TO TOP OR 6" BELOW CEILING, WHICH EVER IS HIGHER. 48" TO CENTERLINE OF BOX - NOT MORE THAN 5'-0" FROM EXIT. EXCEPTION: 44" MAXIMUM TO TOP ABOVE COUNTERS WHICH ARE. Mounting Height Requirements for Fire Alarm System Control Equipment According to NFPA 72 Proper installation of fire alarm components is critical to saving lives during emergencies! Below are key mounting height requirements for fire alarm system components as per NFPA 72 standards: Installation. Choose the right box based on environment (indoor/outdoor), load capacity, and durability. Check for proper IP/NEMA ratings and material quality. Practice good wiring: secure. NFPA is offering a free graphic that shows installation requirements for fire alarm equipment such as pull stations, smoke and heat detectors, notification appliances, and control equipment.

## Installation height of fire protection module in distribution box



The document outlines the mounting heights for fire detection and alarm devices as per NFPA 72 2013 Edition for the Sonata Premier and The Premier Hotel project.



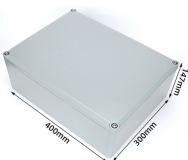
This quick reference can help you determine the minimum and maximum heights for wall-mounted fire alarm equipment as found in the 2022 edition of NFPA 72®, National Fire Alarm and ...



Fire Alarm Control Unit/Panel (FACU/FACP) •  
Height: Lowest switch, lamp, or display: 15 inches minimum; Highest switch, lamp, or display: Maximum 6 feet.



Operating Mechanism Height: The operating mechanism of a manual fire alarm box must be mounted between 42 inches (1.07 m) and 48 inches (1.22 m) above the finished floor.



Article 760 covers the installation of wiring and equipment for fire alarm systems. Residential smoke alarm systems, including interconnecting wiring, are not ...



The proper installation of a distribution box involves placing it at the right height to ensure safety and convenience. Mounting it 4.5 to 5.5 feet (1.4 to 1.7 meters) high makes it easily accessible without ...



This quick reference can help you determine the minimum and maximum heights for wall-mounted fire alarm equipment as found in the 2022 edition of NFPA 72®, ...



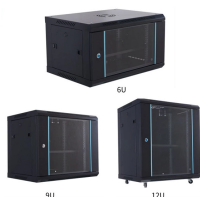
In homes, the best height for installation is about 1.5 meters from the floor — it's easy to reach and out of children's reach. In industrial settings, you may need to adjust the height depending ...



19. TEMPORARY LIGHTING, POWER, FIRE, AND SAFETY: PROVIDE TEMPORARY LIGHTING AND POWER AS REQUIRED IN AREAS UNDERGOING WORK DURING CONSTRUCTION. FURNISH ...



The NFPA 72 or the National Fire Alarm and Signaling Code requires the manually operable part of the fire alarm system to be installed at a minimum height of 42 inches (1.07 m).



These questions address NFPA 72 (2022) guidelines for the installation of fire alarm initiating and notification devices, encompassing criteria for device coverage, spacing, and optimal location.



Comprehensive guide summarizing all NFPA 72 installation and design requirements including mounting heights, detector spacing, visual and audible notification distances, and manual ...

## Contact Us

For more information, pricing, or custom network solutions, please contact us:

Website: <https://www.hashherbcafe.co.za>

Email: [hello@hashherbcafe.co.za](mailto:hello@hashherbcafe.co.za)

Phone: +27 63 814 7295

Address: 15 Galaxy Road, Linbro Business Park, Johannesburg, 2065, South Africa

This document is for informational purposes only. Specifications subject to change without notice.

