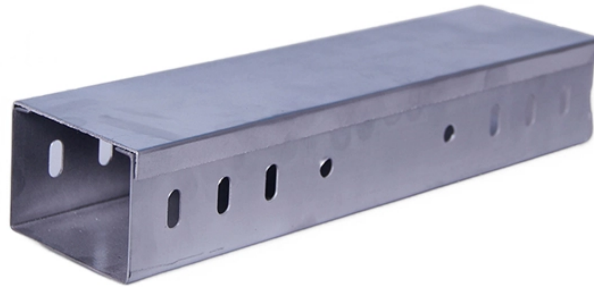


Inquiry for Remote Energy Monitoring of Communication Sites



Overview

Remote radio and telecom sites are generally monitored through a device called a Remote Terminal Unit (or RTU). Historically, these devices could measure dry contact inputs and analog voltages to check them periodically for abnormal levels. When a problem was detected, the RTU could send an alarm. TELSEC® Remote Monitoring Systems designed for sites that do not have network connectivity. Ideal for a wider range of monitoring needs, the MP3 addresses critical infrastructure equipment in utility substations, telecom shelters, and more. Unmanned – It is well known and quite obvious that. Technologies at Nuclear Power Plants Criteria for Determining the Safety of Wireless TECHNICAL LETTER REPORT TLR-RES-DE-2023-006 Criteria for Determining the Safety of Wireless Technologies at Nuclear Power Plants March 2023 Division of Engineering Office of Nuclear Regulatory Research U. Nuclear. Connectivity and Communications Solutions Purpose-built for Energy Industry Operators. Explore Network Over 100 of the leading.

Inquiry for Remote Energy Monitoring of Communication Sites



With Energy & Technical Services' Remote Control System, you gain an unprecedented clarity into your energy landscape, to the micro-level. Energy insights are then used to dynamically adjust systems ...



Both remote transmission sites and town centre exchange nodes require secure power and monitoring to operate reliably whilst co-location infrastructure needs to be monetised through consumption ...



If the use of wireless communications for monitoring SR/ITS equipment is considered, licensees need to know first what information should be included and assessed to determine if the ARM equipment ...



Centralized computer control of multiple monitoring systems and sites for existing remote power plants is described, including database management requirements, and graphics and tabular report ...



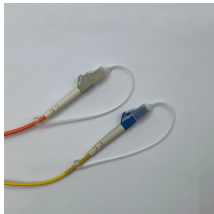
Monitor your customer's remote radio site through Davicom units for an extra monthly fee. This value-added service allows you to offer quicker response times and to tell the customer that they won't ...



Get basin-wide remote communications coverage to allow real-time monitoring of pipeline and gathering systems for pressures, flow rates, environmental leaks and man-down situations. Partner with iNet to ...



Comprehensive remote site monitoring solutions for real-time alerts, environmental data, and system reliability worldwide. We will first discuss the obvious problems, challenges and demands regarding ...



Current uses in NPPs include audio communications, data transfer, wireless dosimetry, equipment, and process monitoring, spent fuel pool level indicators, monitoring devices, and heavy equipment ...



TELSEC® Remote Monitoring Systems designed for sites that do not have network connectivity. Ideal for a wider range of monitoring needs, the MP3 addresses critical infrastructure equipment in utility ...



With SiteBoss, telecom operators gain a proactive, cost-effective way to manage tower sites efficiently, reducing downtime, securing assets, and ensuring long-term network reliability. Discover how ...

Contact Us

For more information, pricing, or custom network solutions, please contact us:

Website: <https://www.hashherbcafe.co.za>

Email: hello@hashherbcafe.co.za

Phone: +27 63 814 7295

Address: 15 Galaxy Road, Linbro Business Park, Johannesburg, 2065, South Africa

This document is for informational purposes only. Specifications subject to change without notice.

