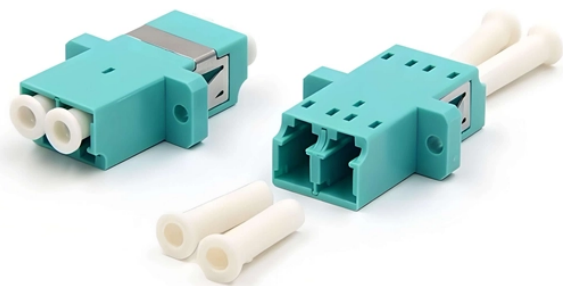


Industrial control switches



Industrial control switches



From miniature pilot lights and industrial switches that mount into 8mm panel cut outs through full size industrial switches that mount into 30mm cutouts, we have an industrial switch or indicator for almost ...



Our range of push buttons, switches, and pilot lights offer solutions to cover industrial applications for all environments. Choose from 16, 22, and 30mm push buttons, available worldwide in metal and plastic ...



Choose from our selection of manual switches, limit switches, motor control switches, and more. Same and Next Day Delivery.



These industrial switches are built to handle high-capacity operations and frequent use, making them ideal for factories, warehouses, and other heavy-duty applications.



The Siemens Industrial Controls Catalog offers fast, interactive product selection with IEC and NEMA controls, circuit breakers, switches, and more.



From light switches to conveyor switches to pool pump switches, our switch offering includes toggle switches, Decora Plus switches, manual motor controllers, safety disconnect switches, specialty ...



Crafted from high-quality materials, our switches are designed to withstand harsh industrial environments. From extreme temperatures to heavy-duty use, they are built to last, reducing the ...



Industrial Controls Distributors: Transforming Your Operations with Industry-Leading Automation and Engineering Solutions For decades, Industrial Controls, a Relevant Company, has delivered ...



Industrial switches are available with a protection class of either IP67 for mounting directly in the field or on the machine, or IP20 for installation in the control cabinet.



Honeywell switch and control components are tailored to exact specifications for stronger performance, longer productivity, and increased safety. Enhanced accuracy and durability are built into every part, ...

Contact Us

For more information, pricing, or custom network solutions, please contact us:

Website: <https://www.hashherbcafe.co.za>

Email: hello@hashherbcafe.co.za

Phone: +27 63 814 7295

Address: 15 Galaxy Road, Linbro Business Park, Johannesburg, 2065, South Africa

This document is for informational purposes only. Specifications subject to change without notice.

