

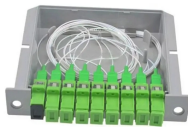
## Industrial Wind Power Distribution Box Cover



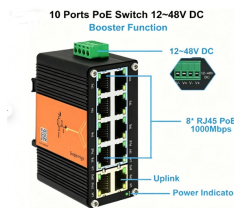
## Industrial Wind Power Distribution Box Cover



This comprehensive guide explores the technical requirements, design considerations, and best practices for implementing junction boxes in wind turbine power distribution systems.



Red Dot® boxes are made from durable die-cast aluminum and available in single- and double-gang rectangular as well as round configurations—with a variety of hub sizes to meet all needs. While-in ...



This comprehensive guide explores the technical requirements, design considerations, and best practices for implementing junction boxes in wind turbine power distribution systems.



Fibercrete ® box pads can be used in the wind industry to support transformers, switchgear, capacitor banks, sectionalizers and other heavy equipment products



When it comes to Weatherproof Electrical Box Covers, you can count on Grainger. Supplies and solutions for every industry, plus easy ordering, fast delivery and 24/7 customer support.



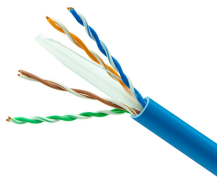
DERFLEX is a professional wind turbine protection cover manufacturer, supplying durable PVC-coated fabric covers for wind turbine blades, nacelles, towers, and components during ...



Lex Products offers a full range of portable power distribution boxes and units, specifically engineered for indoor and outdoor use for the entertainment, industrial and military industries.



Protecting expensive wind power parts is a tough challenge. Sand, dust, moisture, corrosion, scratching, and etching are all hazards to wind turbine blades and components during outdoor storage or transport.



Eaton B-Line series large enclosures offer a high quality solution and provides reliable electrical equipment protection for variable frequency drives, motors, controls, electrical devices and other ...



Provide power where you need it using Leviton weatherproof covers and boxes. Protect your electrical connections with quick and easy installations.



An expert in cover design and manufacturing for over 50 years, Rush-Co manufactures customized covers for transporting wind energy equipment as well as on-site storage of components.

## Contact Us

For more information, pricing, or custom network solutions, please contact us:

Website: <https://www.hashherbcafe.co.za>

Email: [hello@hashherbcafe.co.za](mailto:hello@hashherbcafe.co.za)

Phone: +27 63 814 7295

Address: 15 Galaxy Road, Linbro Business Park, Johannesburg, 2065, South Africa

This document is for informational purposes only. Specifications subject to change without notice.

